

ZVV RANCH

FULLY

Loaded

ANGUS BULL & FEMALE SALE

Noon
Thursday
November 6, 2025
Crossville, TN

JOIN US FOR THIS INCREDIBLE SALE OF POWER-MATERNAL GENETICS!

*Stacked
Maternal
Power*



ZWT



Dear Friends,

AND FELLOW CATTLEMEN,

We invite you to join this year's Fully Loaded Angus Bull and Female Sale! The anticipation has been building and there's no doubt that it's loaded with our best genetics to date. The "ZWT Type" is going to be on full display this coming November 6th. Our motto "Stacked Maternal Power" is evident in this in this year's female offering. The pedigrees are strong, proven, predictable, and built with fertility and longevity in mind. Several of the lots in this year's event are out of foundation donors, representing the "herd-building kind" so rest assured that they will provide a quick return on investment. We encourage you to elevate your operation with these future momma cows!

The bulls are athletic, rugged, and POWERFUL, meeting the standard of the ZWT brand. We stand confidently behind this year's set as the quality runs deep and the maternal power is evident. They're backed by the best angus cows in the business and built to sire performance while keeping all the maternal qualities in check.

If you have any questions about our sale offering, please don't hesitate to call. We're eager to assist and provide insight. Thank you, and we look forward to sharing this momentous occasion with you on November 6th at the Ranch!

The Mayes Family



TONY AND MARY



WIL, ELIZABETH, RYLEIGH AND COLE



ZACH AND BETHANY, BRANTLEY & REESE



TATE AND JOHNA



JAMI & DALLAS WOLTEMATH



ZWT RANCH

Tony, Mary, Zach, Wil & Tate Mayes
OWNERS
1253 McClanahan Drive
Crossville, TN 38571

Wil Mayes
(304) 619-9327
zwtranch2020@gmail.com

Dallas Woltemath
(308) 390-6400
woltemathcattle@gmail.com

www.zwtranch.com





FULLY

Loaded 3

ANGUS BULL & FEMALE SALE

JOIN US FOR THIS INCREDIBLE SALE OF POWER-MATERNAL GENETICS!

Noon
Thursday
November 6, 2025
Crossville, TN



SALE LOCATION

1253 McClanahan Drive, Crossville, TN 38571

DIRECTIONS TO SALE SITE

From Interstate 40, take Exit 311 and go north 1/2 mile. Entrance is on the right. Drive east on the gravel road from entrance 1.5 miles to sale facility.

ACCOMMODATIONS

Crossville, TN (Closest to ZWT Ranch):

- Holiday Inn Express & Suites – (931) 707-1035
- Hampton Inn by Hilton – (931) 707-7170
- Comfort Suites – (931) 707-8638
- Baymont by Wyndham – (931) 456-9338

Cookeville, TN (Approximately 35 minutes east):

- Holiday Inn Express & Suites – (931) 528-7700
- Hampton Inn – (931) 651-1500
- Comfort Suites – (931) 372-0080
- TownePlace Suites by Marriott – (931) 548-0950

FOOD & REFRESHMENTS

Will be available Wednesday evening and sale day.

SALE VIDEO

Will be available for viewing at zwtranch.com

AUCTIONEER

Ryan Dorran (403) 507-6483

SALE DAY PHONES

- Scott Bohrsen (403) 370-3010
- Nate Marin (306) 869-7130
- Rob Voice (306) 270-6082
- Wil Mayes (304) 619-9327
- Dallas Woltemath (308) 390-6400

RING SERVICE

- Alex Tolbert - Angus Journal (706) 338-8733
- Eric Lee - Stockyard Media (608) 295-5312
- Chris Beutler - Livestock Digital (402) 380-8244
- Bill Schermer - The Stockman (641) 425-2641

SALE CONSULTANTS

- Lance Cline - Black & Red LLC (785) 564-1744
- Sam Edwards (865) 719-6008
- Kelvin Jorgensen (402) 366-9475
- Ted Ladner (620) 332-3958
- Clinton Laflin (620) 583-0207
- Mike Marlow - Marlow Cattle Services (405) 880-0108
- Kent McCune (785) 323-0910
- Will Coon (865) 237-7711
- Nate Marin - Bohrsen Marketing Services (306) 869-7130
- Rob Voice - Bohrsen Marketing Services (306) 270-6082

Sale Information

TERMS & CONDITIONS

Cattle will sell under the terms and conditions as recommended by the American Angus Association, including payment upon purchase. ALL PURCHASES MUST BE PAID IN FULL PRIOR TO LOAD OUT. NO EXCEPTIONS. PAST DUE ACCOUNTS ARE SUBJECT TO A 2% MONTHLY FINANCE CHARGE AND BOARDING FEES. Health paper fees will be the buyer's responsibility on any cattle left after 30 days. Selling 2/3 interest and full possession in all bulls unless otherwise noted. Embryos and flushes sell with 50% conception guarantee.

LIABILITY

All persons who attend this sale do so at their own risk, legal or otherwise, for their safety of the behavior of the animals. The owners, sale management firm and the sale staff assume no liability for property loss or any accident that may occur.

HERD HEALTH

Cattle will be accompanied by health certificates for interstate shipment.

TRUCKING

Free trucking will be offered on all BULL PURCHASES totaling \$5,000 or more. ZWT will coordinate this delivery to central locations such as livestock markets, etc. Trucking assistance will also be provided by Mark LeJeune (337) 526-3520 and Nate Schuster (602) 622-8497

LIVESTOCK MORTALITY INSURANCE

James Bessler of Great American Insurance Group will be available to assist with mortality insurance at the buyer's option (815) 762-2641.

SUPPLEMENTAL INFORMATION

A supplemental sheet will be available sale day with sale order and update information. Announcements from auction block will take precedence over printed materials. Current EPD and genetic recessive information is available online.

SALE CIRCUIT

Thursday - ZWT; Friday - Ingram Angus; Saturday - Deer Valley Farm; and Saturday Evening - Stonewall Ridge

SALE CATALOG

Designed by Stockman Design Services, The Stockman



Scott Bohrson
403-370-3010



Rob Voice
306-270-6082



Taylor Richards
306-821-4169



Martin Bohrson
306-220-7901



Darryl Snider
780-385-5561



Jaxon Payne
306-830-0456



Cody Haney
403-845-8806



Nate Marin
306-869-7130



Riley Bohrson
639-213-7777

Manager Notes

WELCOME FROM THE SALE MANAGER

It is our pleasure to welcome you to the ZWT Ranch "Fully Loaded" Bull & Female Sale! The Mayes family has quickly established themselves as one of the most respected and recognizable Angus programs in the country, built on integrity, hard work, and a deep-rooted love for their cattle and community. Their approach to ranching represents everything that makes the beef industry great—faith, family, and a firm belief in doing things the right way.

The ZWT program continues to rise to the top through disciplined breeding decisions, powerful cow families, and an unwavering commitment to quality. This 2025 offering is stacked with the very best genetics they've ever assembled, showcasing bulls with power and presence, and females that embody the maternal strength the ZWT name has become synonymous with. Each lot represents the dedication and pride that the Mayes family puts into their cattle day in and day out.

The lineup for this year's sale is truly special, led by the exciting Lot 1 bull, ZWT Redemption 4687, who stems from one of the greatest females in the Angus breed—Blairswest Erica 77J, the Agribition Champion that has quickly proven herself as an elite donor. Her influence doesn't stop there, as her flush sells alongside a powerful set of maternal sisters that rank among the very best females to ever grace this sale. Added to this star-studded offering are progeny from some of the most notable donors in the business including Coleman Donna 8146, Pine Coulee Patsy A13, and the legendary EA Rose 918, along with elite cow families like Elba, Joanie, Madame Pride, and Blackcap May that provide the genetic depth and predictability serious breeders seek. The set of bulls is equally as strong—athletic, rugged, and stamped with that unmistakable ZWT look—making it one of the most exciting and complete groups ever offered by the Mayes family.

Working alongside the Mayes and Woltemath families is a genuine pleasure for our entire team. They are truly salt-of-the-earth people—patriotic, passionate, and focused on raising cattle that move the breed forward. Their program reflects not only elite Angus genetics but also the values and character of the family behind it. We encourage you to join us at the ranch in Crossville, Tennessee, on November 6th for a great day of Angus fellowship and quality cattle. The Mayes family's hospitality is second to none, and this event promises to be one of the premier Angus sales of the year.

Best regards,
The Bohrson Marketing Team



BOHRSON
MARKETING SERVICES





ZVW RANCH

*Stacked
Maternal
Power*

**ANGUS FEMALES
LOTS 2-43**

Lot 1 Special Bull Feature



ZWT REDEMPTION 4687



Bull Feature!

Lot
1

ZWT REDEMPTION 4687

Birth Date: 10/21/24 • BULL +*21337716 • Tattoo: 4687

#+*S A V Renown 3439 +Rito 707 of Ideal 3407 7075
 +*S A V Renovation 6822 *S A V Blackcap May 4136
 18579309 +*S A V Madame Pride 0151 #+S A V 004 Density 4336
 *Brooking Firebrand 6068 S A V Madame Pride 0075
 +*Blairswest Erica 77J *Brooking Bank Note 4040
 20978237 Bar-E-L Erica 74A Brooking Annie K 390
 Bar-E-L Natural Law 52Y
 HF Erica 339T

CED	BW	WW	YW	SC	Milk	MB	RE
+1	+3.0	+72	+121	+1.27	+24	+0.30	+0.35

- BW: 92 ET Adj WW: 737
- ZWT Redemption 4687 is the lead off bull in this years Fully Loaded event, he's going to ignite the trailblazing path of his prolific dam, Blairswest Erica 77J. His overall performance, eye appeal, and balance as a yearling bull calf has entered uncharted waters for the ZWT Ranch history books.
- His sire, SAV Renovation 6822, is widely recognized as one of the most proven bulls for predictable breeding outcomes. The daughters are of the keeping kind and the sons have topped bull sales across the country in recent years.
- The dam of Redemption is none other than Blairswest Erica 77J. The former Grand Champion Black Angus female of the 2023 Canadian Western Agribition. What makes her EVEN greater is that she is a direct daughter of the proven matriarch Bar-E-L Erica 74A, who is the mother to Blairs External Law.
- Blairswest Erica 77J is entering into top tier status of the maternal greats in our eyes now seeing production in action.
- ZWT Redemption 4687 will be used heavily in our program and we look forward to the bright future ahead of this young herd sire.
- *Selling 1/2 semen interest and full possession*

BLAIRSWEET ERICA 77J – DAM



ZWT RANCH

BLAIRSWEET ERICA 77J



Flush Opportunity!

Selling Flush to the Bull of your Choice!

Lot
2

BLAIRSWEST ERICA 77J

Birth Date: 02/15/21 • FLUSH +*20978237 • Tattoo: 77J

*Brooking Bank Note 4040

#+*Connealy Earnan 076E

*Brooking Firebrand 6068

*E A Rose 918

18730602 Brooking Annie K 390

*S A V Best Interest 0136

Soo Line Annie K 9165

#+S A V Bismarck 5682

Bar-E-L Magnolia 143K

Peak Dot Fame 2N

HF Erica 46P

Bar-E-L Natural Law 52Y

Bar-E-L Erica 74A

19057796 HF Erica 339T

CED	BW	WW	YW	SC	Milk	MB	RE
-1	+3.3	+76	+121	+1.46	+32	+0.03	+0.50

- Blairswest Erica 77J is one of the most impressive females to ever grace the pastures at ZWT Ranch. From the moment she set foot on the ranch we knew the future was bright. The start to her early career has been prolific, being crowned Grand Champion Angus Female of the 2023 Canadian Western Agribition showing as a 2-year-old pair. Now her career in the donor pen is matching pace with her Agribition accolades and the proof is in this sale offering!
- 77J is a direct daughter of the legendary Bar-E-L Erica 74A, who now serves as a donor in the Grand River Embryo program via a \$525,000 private treaty acquisition. Bar-E-L Erica 74A is also the mother to one of the breeds most proven herd sires, Blairs External Law.
- Don't miss out on this herd changing opportunity and get in on the ground floor early with this IVF flush.
- Guaranteeing 8 freezable embryos with no top.
- **Selling an IVF flush to the bull of your choice.**



BAR-E-L ERICA 74A – DAM

ZWT RANCH

ZWT ERICA 5012





ZWT ERICA 5014 – Lot 3B

Lot 3A

ZWT ERICA 5012

Birth Date: 12/20/24 • COW +*21337563 • Tattoo: 5012

+*S A V Bloodline 9578
+*ZWT Blue Blood 1508
 20304546 *E A Rose 918

*Brooking Firebrand 6068
+*Blairswest Erica 77J
 20978237 Bar-E-L Erica 74A

#+*S A V Rainfall 6846
 #*S A V Emblynette 2369
 #*S A V Final Answer 0035
 E A Rose 738
 *Brooking Bank Note 4040
 Brooking Annie K 390
 Bar-E-L Natural Law 52Y
 HF Erica 339T

CED	BW	WW	YW	SC	Milk	MB	RE
-6	+4.2	+79	+132	+1.02	+26	+0.3	+0.64

• BW: 75 ET Adj WW: 680

Lot 3B

ZWT ERICA 5014

Birth Date: 12/22/24 • COW +*21337564 • Tattoo: 5014

+*S A V Bloodline 9578
+*ZWT Blue Blood 1508
 20304546 *E A Rose 918

*Brooking Firebrand 6068
+*Blairswest Erica 77J
 20978237 Bar-E-L Erica 74A

#+*S A V Rainfall 6846
 #*S A V Emblynette 2369
 #*S A V Final Answer 0035
 E A Rose 738
 *Brooking Bank Note 4040
 Brooking Annie K 390
 Bar-E-L Natural Law 52Y
 HF Erica 339T

CED	BW	WW	YW	SC	Milk	MB	RE
-6	+4.2	+79	+132	+1.02	+26	+0.3	+0.64

• BW: 69 ET Adj WW: 606

- This pair of Erica 77J heifer calves are sure to grab your attention and could be potential sale toppers! They are true breeding pieces that can move any program forward.
- They are sired by ZWT Blue Blood 1508, the high selling bull from the 2023 Fully Loaded event. The blending of EA Rose 918 and Blairswest Erica 77J has created a recipe for greatness in these two. Don't miss out!
- Retaining 50% embryo interest in lot 3A

ZWT ERICA 5015



Lot 4 **ZWT ERICA 5015**

Birth Date: 01/04/25 • COW +*21338587 • Tattoo: 5015

<p>#+*S A V Rainfall 6846 18578963</p> <p>*S A V Blackcap May 4136</p> <p>*Brooking Firebrand 6068</p> <p>+*Blairswest Erica 77J 20978237</p>	<p>#*O C C Paxton 730P +Bohi Abigale 6014 #S A V 8180 Traveler 004 #+S A V May 2397</p> <p>*Brooking Bank Note 4040 Brooking Annie K 390 Bar-E-L Natural Law 52Y HF Erica 339T</p>
---	--

CED	BW	WW	YW	SC	Milk	MB	RE
+3	+1.9	+67	+115	+1.16	+29	+0.4	+0.58

- BW: 79 ET Adj WW: 661
- Predictable Success! That's the two words that best describe this young SAV Rainfall 6846 daughter.
- Rainfall daughters are as good as they come and this one you can put in the GREAT category. She's easy doing and cool looking just like her dam. This heifer was always an eye catcher on tours this summer and she continues to impress.

ZWT ERICA 4703



Lot
5

ZWT ERICA 4703

Birth Date: 10/29/24 • COW +*21338619 • Tattoo: 4703

#+*S A V Renown 3439	+Rito 707 of Ideal 3407 7075
+*S A V Renovation 6822	*S A V Blackcap May 4136
18579309	#+S A V 004 Density 4336
+*S A V Madame Pride 0151	S A V Madame Pride 0075
	*Brooking Bank Note 4040
*Brooking Firebrand 6068	Brooking Annie K 390
+*Blairswest Erica 77J	Bar-E-L Natural Law 52Y
20978237	HF Erica 339T
Bar-E-L Erica 74A	

CED	BW	WW	YW	SC	Milk	MB	RE
+1	+3	+72	+121	+1.27	+24	+0.3	+0.35

- BW: 82 ET
- We keep digging into the heart of our embryo program with another prolific daughter of Erica 77J. This one is a full sibling to our Lot 1 bull ZWT Redemption 4687 putting the breeding consistency on full display.
- This one was bred for the long haul being a daughter of SAV Renovation 6822, the udder quality will be phenomenal. Make sure to study this one hard on sale day.
- **Sells open and ready to breed.**



PINE COULEE PATSY A13 – DAM



BLAIR'S EXTERNAL LAW – SIRE

ZWT PATSY 4520 – Lot 6A

Lot 6A

ZWT PATSY 4520

Birth Date: 08/30/24 • COW +*21307559 • Tattoo: 4520

*Duff Napoleon 232
+*Blair's External Law
 19639203 Bar-E-L Erica 74A

*Duff Distinction 9105
 +*Duff Eur 443 Merle 808
 Bar-E-L Natural Law 52Y
 HF Erica 339T

#+*S A V Resource 1441
Pine Coulee Patsy A13
 17583446 Pine Coulee Patsy X36

+Rito 707 of Ideal 3407 7075
 *S A V Blackcap May 4136
 BC Classic 385-7
 +Pine Coulee Patsy T502

CED	BW	WW	YW	SC	Milk	MB	RE
+1	+2.8	+71	+116	+1.03	+21	+0.12	+0.88

• BW: 77 ET Adj WW: 621

- Dam's WWR 3/103 Dam has had over 90 head entered in AHIR
- Brood cow prospects with that Patsy flair! These two direct daughters of Patsy A13, sired by Blairs External Law are something to behold!
- The combination of Bar-E-L Erica 74A and Patsy A13 in this pedigree should be the perfect blend for maternal success. Be sure to study these heifers on sale day!
- **Both sell open and ready to breed.**

Lot 6B

ZWT PATSY 4531

Birth Date: 09/02/24 • COW +*21367272 • Tattoo: 4531

*Duff Napoleon 232
+*Blair's External Law
 19639203 Bar-E-L Erica 74A

*Duff Distinction 9105
 +Duff Eur 443 Merle 808
 Bar-E-L Natural Law 52Y
 HF Erica 339T

#+*S A V Resource 1441
Pine Coulee Patsy A13
 17583446 Pine Coulee Patsy X36

+Rito 707 of Ideal 3407 7075
 *S A V Blackcap May 4136
 BC Classic 385-7
 +Pine Coulee Patsy T502

CED	BW	WW	YW	SC	Milk	MB	RE
+1	+2.8	+71	+116	+1.03	+21	+0.12	+0.88

• BW: 88 ET



ZWT PATSY 4531 – Lot 6B



ZWT PATSY 4576 – Lot 7

Lot
7

ZWT PATSY 4576

Birth Date: 09/16/24 • COW +*21307567 • Tattoo: 4576

#S A V 8180 **Traveler 004**
13512009 +Boyd Forever Lady 8003

#G D A R Traveler 71
Sitz Everelda Entense 1137
#A A R New Trend
S V F Forever Lady 57D
+Rito 707 of Ideal 3407 7075
*S A V Blackcap May 4136
BC Classic 385-7
+Pine Coulee Patsy T502

#+*S A V Resource 1441
17583446 Pine Coulee Patsy X36

CED	BW	WW	YW	SC	Milk	MB	RE
+0	+3.3	+67	+117	+0.97	+24	+0.3	+0.63

- BW: 78 ET Adj WW: 530
- Quite possibly the most unique breeding piece in the entire female offering. This heifer is bred for the long haul and I can already picture what she will look like as a mature cow.
- Sired by the time-tested and proven SAV 8180 Traveler 004, and out of the prolific producer Pine Coulee Patsy A13. This heifer has air tight maternal potential, be sure to tune in here!
- **Sells open and ready to breed.**



ZWT PATSY 3018 – Maternal Sibling

Lot
8

ZWT PATSY 4522

Birth Date: 08/30/24 • COW *21306749 • Tattoo: 4522

#+*S A V Renown 3439
+*ZWT **Summitt 6507**
18561289 +*Coleman Donna 714

Bar-E-L Natural Law 52Y
+*ZWT **Patsy 2691**
20671370 Pine Coulee Patsy A13

+Rito 707 of Ideal 3407 7075
*S A V Blackcap May 4136
#*Connealy Onward
+*Coleman Donna 386
#+S A V Bismarck 5682
Bar-E-L Magnolia 143K
#+*S A V Resource 1441
Pine Coulee Patsy X36

CED	BW	WW	YW	SC	Milk	MB	RE
+9	+0.3	+63	+111		+21		

- BW: 63 Adj WW: 557 Ratio: 99
- A young Patsy A13 daughter delivering striking production! This individual is the product of a hard working first calf heifer, and she didn't fail to deliver. One of our favorites in the whole fall yearling group!
- Being sired by our ZWT Summitt 6507 helps combine Donna 714 and Patsy A13 into a pedigree destined for success. Make sure to take a good look here!
- **Sells open and ready to breed.**



ZWT PATSY 2552 – Maternal Sibling



ZWT PATSY 4522 – Lot 8

Full Sisters



ZWT PATSY 5071 – Lot 9A

Lot
9A

ZWT PATSY 5071

Birth Date: 02/02/25 • COW +*21337565 • Tattoo: 5071

+*S A V Bloodline 9578	#+*S A V Rainfall 6846
+*ZWT Blue Blood 1508	#*S A V Emblynette 2369
20304546	#*S A V Final Answer 0035
*E A Rose 918	E A Rose 738
	+Rito 707 of Ideal 3407 7075
#+*S A V Resource 1441	*S A V Blackcap May 4136
Pine Coulee Patsy A13	BC Classic 385-7
17583446	+Pine Coulee Patsy T502
Pine Coulee Patsy X36	

CED	BW	WW	YW	SC	Milk	MB	RE
-6	+4.3	+81	+143	+0.7	+22	+0.51	+0.94

- BW: 94 ET Adj WW: 762
- Highest adj 205 weight of spring heifer calves

Lot
9B

ZWT PATSY 5104

Birth Date: 02/08/25 • COW +*21337569 • Tattoo: 5104

+*S A V Bloodline 9578	#+*S A V Rainfall 6846
+*ZWT Blue Blood 1508	#*S A V Emblynette 2369
20304546	#*S A V Final Answer 0035
*E A Rose 918	E A Rose 738
	+Rito 707 of Ideal 3407 7075
#+*S A V Resource 1441	*S A V Blackcap May 4136
Pine Coulee Patsy A13	BC Classic 385-7
17583446	+Pine Coulee Patsy T502
Pine Coulee Patsy X36	

CED	BW	WW	YW	SC	Milk	MB	RE
-6	+4.3	+81	+143	+0.7	+22	+0.51	+0.94

- BW: 92 ET Adj WW: 691



ZWT PATSY 5104 – Lot 9B



ZWT BLUE BLOOD 1508 – SIRE

- These flush sisters are from the heart of our embryo program. The Blue Blood 1508 x Patsy A13 flush might be one of the most consistent flushes we've ever had here at the ranch and we didn't hold back on offering up two of our best!
- Make sure to study up because when you stack two cows of this magnitude in a pedigree, EA Rose 918 and Patsy A13, its bound for greatness.



ZWT PATSY 4035 – Lot 10A



ZWT PATSY 4039 – Lot 10B



ZWT PATSY 3543 – Lot 11

Lot 10A

ZWT PATSY 4035

Birth Date: 02/01/24 • COW +*21012741 • Tattoo: 4035

#*Sitz Stellar 726D
***SITZ Galactic 723G**
 19393010 *Sitz Barbaramere Jet 328E
 #+*S A V Resource 1441
Pine Coulee Patsy A13
 17583446 Pine Coulee Patsy X36

#*Mohnen Substantial 272
 *SITZ Pride 200B
 *Sitz Emblem 11125
 +*Sitz Barbaramere Jet 771Z
 +Rito 707 of Ideal 3407 7075
 *S A V Blackcap May 4136
 BC Classic 385-7
 +Pine Coulee Patsy T502

CED	BW	WW	YW	SC	Milk	MB	RE
+2	+2	+78	+137	+0.87	+21	+0.54	+0.81

- BW: 83 ET
- Due to Basin True Grit 2/20/26

Lot 10B

ZWT PATSY 4039

Birth Date: 02/07/24 • COW +*21293892 • Tattoo: 4039

#*Sitz Stellar 726D
***SITZ Galactic 723G**
 19393010 *Sitz Barbaramere Jet 328E
 #+*S A V Resource 1441
Pine Coulee Patsy A13
 17583446 Pine Coulee Patsy X36

#*Mohnen Substantial 272
 *SITZ Pride 200B
 *Sitz Emblem 11125
 +*Sitz Barbaramere Jet 771Z
 +Rito 707 of Ideal 3407 7075
 *S A V Blackcap May 4136
 BC Classic 385-7
 +Pine Coulee Patsy T502

CED	BW	WW	YW	SC	Milk	MB	RE
+2	+2	+78	+137	+0.87	+21	+0.54	+0.81

- BW: 73 ET Adj WW: 645
- Due to Basin True Grit 2/20/26
- **POWERFUL.** That is the word that best describes these two bred heifers.
- A13 has delivered again with this pair of bred heifers sired by SITZ Galactic 723G. Make sure to find them on sale day. Were sure you'll be impressed!



SITZ GALACTIC 723G Z-SIRE LOTS 10A & 10B

Lot 11

ZWT PATSY 3543

Birth Date: 09/11/23 • COW +*21311952 • Tattoo: 3543

Don Aparicio Serrucho57 Maxi
+*Hummel South America
 19919943 Rubeta Fontana 7567
 #+*S A V Resource 1441
Pine Coulee Patsy A13
 17583446 Pine Coulee Patsy X36

Don Jose 176 Maxi
 Don Aparicio Serranias 57
 Consenza Don Roberto 338
 Rubeta Fontana 6207
 +Rito 707 of Ideal 3407 7075
 *S A V Blackcap May 4136
 BC Classic 385-7
 +Pine Coulee Patsy T502

CED	BW	WW	YW	SC	Milk	MB	RE
-1	+3.8	+84	+150	+1.02	+17	+0.21	+1.05

- BW: 78 ET Adj WW: 550
- Combining the best in world-wide genetics and maintaining that Patsy spice! This high performing bred heifer sired by Hummer South America is a maternal sister to past high sellers, ZWT Patsy 2552 and ZWT Patsy 3018, who are both serving in the respectable Voss Angus and Rust Mountain View Ranch programs.
- Don't miss out on this unique genetic package!
- Due to HF Ringo 338 3/14/26



HUMMEL SOUTH AMERICA – SIRE LOT 11

ZWT DONNA 4506



Lot
12

ZWT DONNA 4506

Birth Date: 08/22/24 • COW +*21312974 • Tattoo: 4506

<p>#+*S A V Renown 3439 #+*Coleman Donna 439 #Connealy Thunder #Connealy Thunder 19248244</p>	<p>+Rito 707 of Ideal 3407 7075 *S A V Blackcap May 4136 #+GDAR Game Day 449 +*Coleman Donna 714 #Baldrige Kaboom K243 KCF #Parka of Conanga 241 #*Connealy Onward +*Coleman Donna 386</p>
---	--

CED	BW	WW	YW	SC	Milk	MB	RE
+5	+1.1	+69	+120	+0.38	+29	+0.17	+0.48

- BW: 72 ET Adj WW: 571
- Dam's WWR 4/109 YWR 4/109
- This heifer sired by Coleman Glacier 041 is a true gem. She is flawless in her design and destined for greatness as she is a direct daughter of the maternal giant, Coleman Donna 8146.
- Her prolific dam is the all-time record selling female in Coleman Angus history where she sold for \$375,000 for one-half interest for a \$750,000 valuation through the 2024 Your Maternal Source Sale. She has an impressive progeny production record of BR 3@92, WR 3@109 and YR 3@109.
- Take a hard look here on sale day and add a future donor to your program!
- Sells open and ready to breed.**



COLEMAN DONNA 8146 – DAM



COLEMAN GLACIER 041 – SIRE

Lot
13A

ZWT DONNA 4507

Birth Date: 08/25/24 • COW +*21312973 • Tattoo: 4507

+*Hummel South America
19919943 Rubeta Fontana 7567

Don Jose 176 Maxi
Don Aparicio Serranias 57
Consenza Don Roberto 338
Rubeta Fontana 6207
#Baldridge Kaboom K243 KCF
#Parka of Conanga 241
#*Connealy Onward
+*Coleman Donna 386

#Connealy Thunder
+*Coleman Donna 8146
19248244 +*Coleman Donna 714

CED	BW	WW	YW	SC	Milk	MB	RE
+4	+1.3	+69	+118	+0.62	+22	+0.26	+0.73

• BW: 81 ET Adj WW: 679

Lot
13B

ZWT DONNA 4512

Birth Date: 08/27/24 • COW +*21312977 • Tattoo: 4512

+*Hummel South America
19919943 Rubeta Fontana 7567

Don Jose 176 Maxi
Don Aparicio Serranias 57
Consenza Don Roberto 338
Rubeta Fontana 6207
#Baldridge Kaboom K243 KCF
#Parka of Conanga 241
#*Connealy Onward
+*Coleman Donna 386

#Connealy Thunder
+*Coleman Donna 8146
19248244 +*Coleman Donna 714

CED	BW	WW	YW	SC	Milk	MB	RE
+4	+1.3	+69	+118	+0.62	+22	+0.26	+0.73

• BW: 86 ET Adj WW: 612

- A pair of high performing full sisters that are direct daughters of Hummel South America! A genetic package that is extremely unique!
- Combining the production of Coleman Donna 8146 with the outcross genetics of Hummel South America is sure to make these two heifers' juggernauts in the breeding pasture.
- Get on board with the outcross maternal performance.
- **Both sell open and ready to breed.**



HUMMEL SOUTH AMERICA – SIRE LOTS 13A & 13B



ZWT DONNA 4507 – Lot 13A

Lot
13C

ZWT DONNA 4505

Birth Date: 08/19/24 • COW +*21312975 • Tattoo: 4505

#*O C C Juneau 807J
+*Coleman Rock 7200
19107936 +*Coleman Donna 714

#+O C C Emblazon 854E
O C C Dixie Erica 903E
#*Connealy Onward
+*Coleman Donna 386
#Baldridge Kaboom K243 KCF
#Parka of Conanga 241
#*Connealy Onward
+*Coleman Donna 386

#Connealy Thunder
+*Coleman Donna 8146
19248244 +*Coleman Donna 714

CED	BW	WW	YW	SC	Milk	MB	RE
+6	+0.7	+67	+119	+0.92	+26	+0.23	+0.46

• BW: 72 ET Adj WW: 625

- Rock solid genetics here out of Donna 8146! This heifer sired by Coleman Rock 7200 is doubling up on the greatness of Donna 714. When you get them bred this tight with proven consistency you can bank on making progress. Study up and tune in on this Donna!
- **Sells open and ready to breed.**



COLEMAN ROCK 7200 – SIRE LOT 13C



ZWT DONNA 4512 – Lot 13B



ZWT DONNA 4505 – Lot 13C



ZWT DONNA 5115 – Lot 14A

Lot 14A
ZWT DONNA 5115
 Birth Date: 02/12/25 • COW +*21337571 • Tattoo: 5115

+*S A V Bloodline 9578
 #+*S A V Rainfall 6846
 #*S A V Emblynette 2369
 #*S A V Final Answer 0035
 E A Rose 918
 E A Rose 738
 #Connealy Thunder
 #Baldridge Kaboom K243 KCF
 #Parka of Conanga 241
 #*Connealy Onward
 +*Coleman Donna 714
 +*Coleman Donna 386

CED	BW	WW	YW	SC	Milk	MB	RE
-4	+2.9	+73	+129	+0.46	+25	+0.55	+0.51

• BW: 73 ET Adj WW: 647

- Blending of Maternal greats! A pair of flush sisters sired by ZWT Blue Blood 1508, the high selling bull of the 2023 Fully Loaded Sale. Get in on the ground floor early here out of these young daughters of Coleman Donna 8146.
- Blending Rose 918 and Donna 8146 into the pedigree is what Stacked Maternal Power is all about, buy with confidence!

Lot 14B
ZWT DONNA 5082
 Birth Date: 02/03/25 • COW +*21337567 • Tattoo: 5082

+*S A V Bloodline 9578
 #+*S A V Rainfall 6846
 #*S A V Emblynette 2369
 #*S A V Final Answer 0035
 *E A Rose 918
 E A Rose 738
 #Connealy Thunder
 #Baldridge Kaboom K243 KCF
 #Parka of Conanga 241
 #*Connealy Onward
 19248244 +*Coleman Donna 714
 +*Coleman Donna 386

CED	BW	WW	YW	SC	Milk	MB	RE
-4	+2.9	+73	+129	+0.46	+25	+0.55	+0.51

• BW: 82 ET Adj WW: 650

Full Sisters
ZWT RANCH



ZWT DONNA 5086 – Lot 15

Lot 15 **ZWT DONNA 5086**

Birth Date: 02/03/25 • COW *21337728 • Tattoo: 5086

#+*S A V Rainfall 6846 #+*Coleman Charlo 0256
 #S A V Blackcap May 4136
+*S A V Riverside 2381
 20480732 #*S A V Resource 1441
 #*S A V Madame Pride 4407 +*S A V Madame Pride 0235
 *Lafins Marvel 1801
***ZWT Donna 2533**
 20741545 ZWT Donna 0538 #+*PVF Insight 0129
 Laffins Galaxie 3332
 +*ZWT Summitt 6507
 +ZWT Donna 6800

CED	BW	WW	YW	SC	Milk	MB	RE
+9	+0.5	+59	+110		+18		

- BW: 69 Adj WW: 632 Ratio: 96
- A striking heifer calf out of our resident herd sire SAV Riverside 2381, a full sibling to SAV Downpour 8794. This heifer has that special look about her and is backed by the proven Donna Cow family.



ZWT DONNA 5076 – Lot 15A

Lot 15A **ZWT DONNA 5076**

Birth Date: 02/02/25 • COW *21337725 • Tattoo: 5076

#+*S A V Rainfall 6846 #+*Coleman Charlo 0256
 #S A V Blackcap May 4136
+*S A V Riverside 2381
 20480732 #*S A V Resource 1441
 #*S A V Madame Pride 4407 +*S A V Madame Pride 0235
 *Duff 4Real 16250 2084 +*Duff-JC 4Real 16250
ZWT Donna 3114
 20689560 ZWT Donna 6001 Duff Dixie Erica 244 1729
 +*S A V Response 2411
 +Coleman Donna 2357

CED	BW	WW	YW	SC	Milk	MB	RE
+2	+2.9	+58	+107		+20		

- BW: 77 Adj WW: 648 Ratio: 99



ZWT DONNA 5057 – Lot 15B

Lot 15B **ZWT DONNA 5057**

Birth Date: 01/30/25 • COW *21337721 • Tattoo: 5057

#*Plattmereg Weigh Up K360 #*Sitz Upward 307R
 #Barbara of Plattmereg 337
#J&J Weigh Up 294
 18004546 J & J Miss Georgina 294 #TC Romeo 917
 J&J Miss Georgina 927
 +Rito 707 of Ideal 3407 7075
 #S A V Blackcap May 4136
 #+*Coleman Juneau 044
 +*Coleman Donna 005
 #+*S A V Renown 3439
+*ZWT Donna 265
 20646952 +*ZWT Donna 4873

CED	BW	WW	YW	SC	Milk	MB	RE
+7	+0.1	+67	+117		+24		

- BW: 67 Adj WW: 686 Ratio: 104



ZWT DONNA 3698 – Lot 16



ZWT DONNA 4553 – Lot 16A

Lot 16 **ZWT DONNA 3698**

Birth Date: 08/29/23 • COW 21109553 • Tattoo: 3698

*S A V Renew 8132 #+*S A V Renown 3439
 #*S A V Blackcap May 4593
***KLA Respect 186**
 20047598 +*KLA Forever Lady 7190 #S A V Net Worth 4200
 #*Kla Forever Lady 125
 #*O C C Juneau 807J
 #+*Coleman Juneau 044 #*Coleman Donna 714
+*ZWT Donna 4873
 18177727 +*Coleman Donna 005 N Bar Shadow X4124
 +*Coleman Donna 386

CED	BW	WW	YW	SC	Milk	MB	RE
+2	+2.6	+68	+114		+27	+0.30	+0.73

Lot 16A **ZWT DONNA 4553**

Birth Date: 09/07/24 • COW 21312961 • Tattoo: 4553

+*S A V Bloodline 9578 #+*S A V Rainfall 6846
 #*S A V Emblynette 2369
+*ZWT Blue Blood 1508
 20304546 *E A Rose 918 #*S A V Final Answer 0035
 E A Rose 738
 #+*S A V Resource 1441
 S A V Madame Pride 0075
ZWT Donna 9047
 20092708 +*ZWT Donna 3472 #+*S A V 707 Rito 9969
 +*Coleman Donna 714

CED	BW	WW	YW	SC	Milk	MB	RE
+1	+2.1	+69	+124		+21		

- BW: 79 Adj WW: 592
- Beautiful female by our Sr. herd sire KLA Respect 186. She was the natural calf off of ZWT Donna 4873 who recently served as a donor in our program and is now deceased.
- These daughters by KLA Respect 186 are going to make great cows and you can count on that extra power of his to breed on into the future! Add this great Donna pair to your herd!
- Heifer calf born 9/28/26 by B/J KCC Spade 0660
- BW: 75 Adj WW: 570 Ratio: 102
- A ZWT Blue Blood 1508 daughter stemming straight from the Donna 714 cow family. Study the pedigree and check out the Rose x Donna combination. Anytime you see cows like these in the pedigree its deserving of attention.
- Sells open and ready to breed

ZWT ROSE G034



Kate Roberts

Donor Feature!

Lot
17

ZWT ROSE G034

Birth Date: 03/15/19 • COW +*2005941 • Tattoo: 034

#+*Sinclair Emulation XXP
***S A V Exceptional 7279**
 18911196 +*S A V Duke Girl 4441

#*S A V Final Answer 0035
***E A Rose 918**
 16460381 E A Rose 738

#*N Bar Emulation EXT
 #N Bar Primrose Y3051
 #+*S A V Resource 1441
 #A C Duke Girl 57
 #Sitz Traveler 8180
 S A V Emulous 8145
 #Sitz Tradition RLS 8702
 M A S Bando Rose 4536

CED	BW	WW	YW	SC	Milk	MB	RE
+0	+2.2	+64	+117	+0.85	+27	+0.45	+0.41

- **BW: 75 ET DONOR COW!**
- ZWT Rose G034 is the most POWERFUL direct daughter of the \$100,000 valued foundation donor EA Rose 918 who has produced several high selling son's including, Brooking Bank Note 4040, ZWT Intervention 7363, ZWT Infusion F182 and ZWT Blue Blood 1508.
- Maternal sisters include past sale features, ZWT Rose 2500 and ZWT Rose 2502, now serving as featured donors in the Voss Angus and Ingram Angus programs.
- G034 has that proud "Rose Look" and featured a beautiful heifer in last years Fully Loaded Sale that went to the notable Blairswest program in Saskatchewan, Canada. If you are interested in adding a new Donor to your program then look no further.
- Owned with Southall Angus
- **Due 4/22/26 to KT Arctic Cat 4525**
- **Selling Full Interest and Possession**

MATERNAL SIBLINGS:



ZWT RENDEZVOUS 3005



ZWT BLUE BLOOD 1508



ZWT INTERVENTION 7363



EA ROSE 918 - DAM LOT 17



ZWT ROSE 5156 - Lot 18



ZWT RENDITION 3039 - SIRE LOT 18

Lot
18

ZWT ROSE 5156

Birth Date: 02/22/25 • COW *21337738 • Tattoo: 5156

#+*S A V Renew 8132
+*ZWT Rendition 3039
 20696520 *Shady Brook Everelda 9523

#+*S A V Renown 3439
 #+*S A V Blackcap May 4593
 #+*Deer Valley Growth Fund
 *Shady Brook Everelda 7506
 #+*S A V Cutting Edge 4857
 #S A V Emblynette 8259
 #*Soo Line Motive 9016
 *E A Rose 918

#S A V Cut Above 6271
+*Rust MS Rose 9206G
 19483219 *Soo Line Rose 1019

CED	BW	WW	YW	SC	Milk	MB	RE
+5	+2.3	+72	+125	+1.42	+26	+0.5	+1.05

- **BW: 72 Adj WW: 676 Ratio: 103**
- Exciting Opportunity! The first daughter sired by last years \$80,000 top selling bull, ZWT Rendition 3039. It is still early but the signs are looking overwhelmingly good for the future ahead for Rendition and this heifer puts his breeding potential on full display.
- When you study this heifer on sale day you will find extra bone and power, while still maintaining that maternal look and to top it all off, she's a Rose! Tune in here and get on board early!

Lot
18A

ZWT ROSE 5129

Birth Date: 2/17/25 • COW 21367274 • Tattoo: 5129

#+*Coleman Bravo 6313
***ZWT Declaration 1551**
 20191024 +*Wilks Henrietta Pride 5208

#+*Coleman Charlo 0256
 #+*Coleman Donna 714
 #+*Quaker Hill Rampage 0A36
 #+*SQ 12Y of Henrietta Pride
 #+*S A V Impact 5595
 *E A Rose 918
 #S A V Cut Above 6271
 *Soo Line Rose 1019

#*ZWT Intervention 7363
ZWT Rose 3314
 20710378 +*Rust MS Rose 9206G

CED	BW	WW	YW	SC	Milk	MB	RE
+11	+1.3	+65	+113		+28		

- **BW: 80**
- This calf represents a phenomenal effort by her 2-year-old dam. Study the bottom side here and see that were working with a double bred Rose, very unique.
- She is sired by ZWT Declaration 1551, now serving at Jon Janssens in Iowa. Interesting cow prospect to evaluate.



ZWT ROSE 3275 – Lot 19

ZWT RANCH

Lot 19

ZWT ROSE 3275

Birth Date: 04/03/23 • COW 20710363 • Tattoo: 3275

*Brooking Bank Note 4040
+*Brooking Gold Coin 8069
 19377658 S A V Emblynette 4223

#+*S A V Renown 3439
+*ZWT Rose 8321
 19629496 *E A Rose 918

#+*Connealy Earnan 076E
 *E A Rose 918
 #*S A V Harvestor 0338
 +S A V Emblynette 1786
 +Rito 707 of Ideal 3407 7075
 *S A V Blackcap May 4136
 #*S A V Final Answer 0035
 E A Rose 738

CED	BW	WW	YW	SC	Milk	MB	RE
+2	+3.1	+77	+127		+19	+0.40	+0.62

- BW: 80 Adj WW: 759
- Beautiful young two-year old sired by Brooking Gold Coin 8069 back to a direct EA Rose 918 daughter sired by Renown. Yes, you read that right.
- Evaluate this pair with care because the Gold Coin cattle here are very consistent and of the keeping kind. Bright future ahead.
- **Bull Calf born 9/12/25 by Coleman Bravo 6313**



SAV RENOWN 3439 – MATERNAL GRANDSIRE LOT 19



ZWT ROSE 4374 – Lot 19A

Lot 19A

ZWT ROSE 4374

Birth Date: 03/24/24 • COW 21283503 • Tattoo: 4374

TC Thunder 7508
BJF KCC Spade 0660
 19787562 BJF KCC Elba 8335

+S A V Engage 0859
ZWT Rose 2131
 20447268 +ZWT Rose G020

#Connealy Thunder
 +TC Marcia 2523
 #+*Stevenson Turning Point
 BJF Elba of DBF 3919
 #+*S A V Elation 7899
 #+*S A V Blackcap May 1808
 +*S A V Reign 6845
 *E A Rose 918

CED	BW	WW	YW	SC	Milk	MB	RE
+5	+2.2	+68	+117		+23		

- BW: 68 Adj WW: 600 Ratio: 112
- Dam's WWR 1/112
- A solid bred heifer sired by BJF KCC Spade 0660, a grandson of Connealy Thunder. Add this female to your bred heifer pasture and enjoy the ride. She's a Rose!
- **Due to Mohnen Substantial 2/20/26**

Lot
20

S A V BLACKCAP MAY 6605

Birth Date: 01/02/16 • COW +*18531349 • Tattoo: 6605

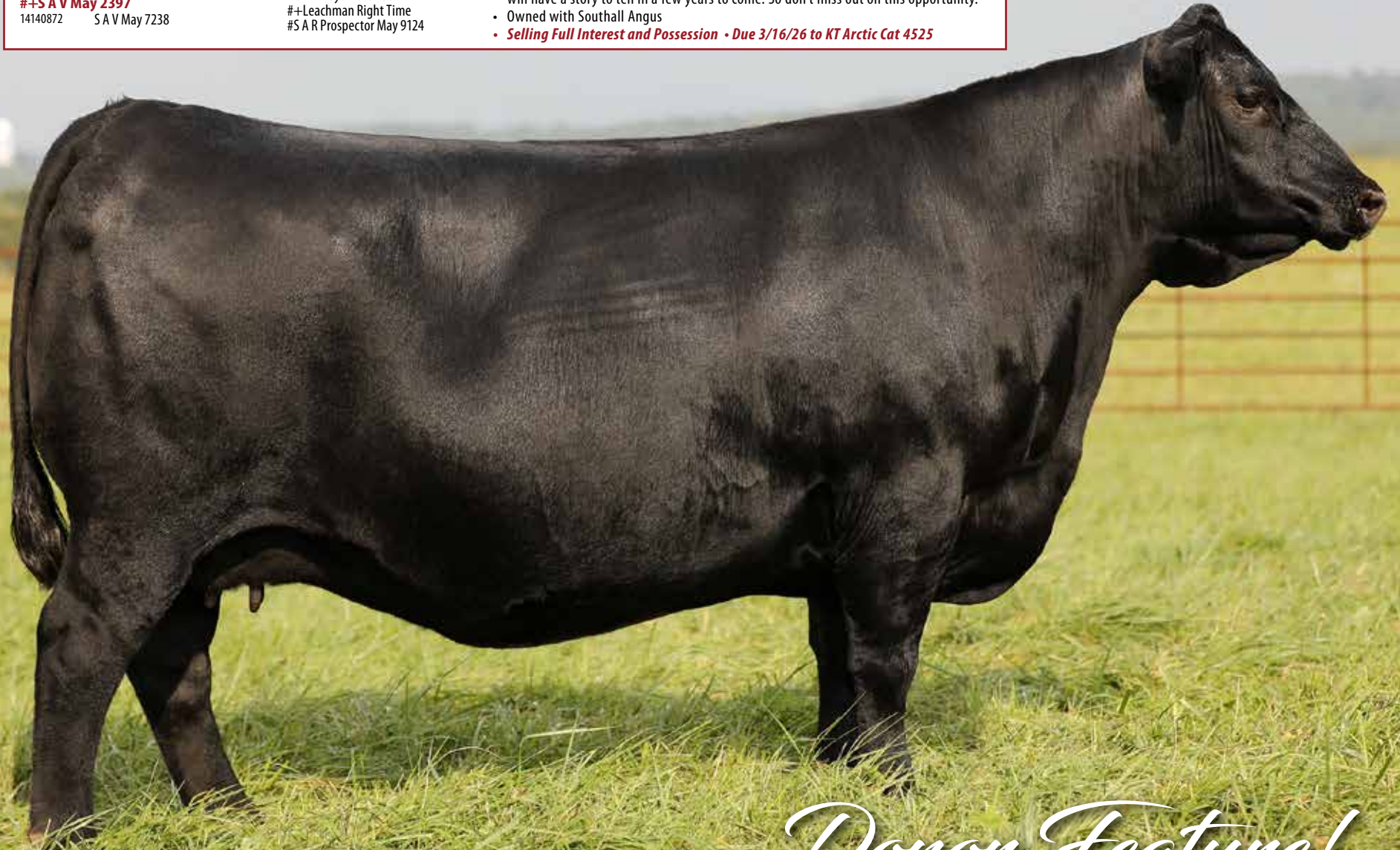
#*O C C Paxton 730P
#+***Coleman Charlo 0256**
16879074 +Bohi Abigale 6014

#+S A F 598 Bando 5175
#+**S A V May 2397**
14140872 S A V May 7238

+O C C Focus 813F
O C C Blackbird 736K
#Sitz Traveler 8180
S A V Abigale 6062
#Bon View Bando 598
+S A F Royal Lass 1002
#+Leachman Right Time
#S A R Prospector May 9124

CED	BW	WW	YW	SC	Milk	MB	RE
+4	+2.6	+75	+125	+1.14	+29	+0.50	+0.57

- **BW: 79 ET Adj WW: 717 DONOR COW!**
- Offering up a prepotent donor sired by the proven Coleman Charlo 0256 and a direct daughter of SAV Blackcap May 2397, making her a maternal sister to the legendary SAV Blackcap May 4136.
- It's not very often that you sell a cow of this magnitude. The sheer volume, power and consistent cow family makes this donor a rarity. We can promise you that 6605 progeny will have a story to tell in a few years to come. So don't miss out on this opportunity.
- Owned with Southall Angus
- **Selling Full Interest and Possession • Due 3/16/26 to KT Arctic Cat 4525**



Donor Feature!



SAV BLACKCAP MAY 0583 – Lot 21



SAV BLACKCAP MAY 1808 – DAM Lot 21



SITZ INCENTIVE 704H – SIRE Lot 21A

Lot 21 SAV BLACKCAP MAY 0583

Birth Date: 02/15/20 • COW +19810891 • Tattoo: 0583

#+*S A V Rainfall 6846
+*S A V Downpour 8794
 19250026 #*S A V Madame Pride 4407

#S A V Net Worth 4200
#+*S A V Blackcap May 1808
 16984083 #+S A V May 2397

#+*Coleman Charlo 0256
 *S A V Blackcap May 4136
 #+*S A V Resource 1441
 +*S A V Madame Pride 0235
 #S A V 8180 Traveler 004
 +S A V May 2410
 #+S A F 598 Bando 5175
 S A V May 7238

CED	BW	WW	YW	SC	Milk	MB	RE
+1	+4.8	+77	+142	+1.59	+26	+0.54	+0.66

• BW: 79 ET Adj WW: 746 **DONOR COW!**

- We have reached deep into the donor arsenal to keep this event "Fully Loaded" and SAV Blackcap May 0583 will not disappoint. She is deep, powerful and out of the proven maternal matron, SAV Blackcap May 1808.
- Her sire, SAV Downpour 8794, is recognized for his ability to sire high performers and that's exactly what we have here.
- We have some exciting matings coming in the pipeline out of this powerful donor. Make sure to study her heifer that sells as Lot 21A. This cow could be at the forefront of many programs, so why not make her the forefront of yours.

- **Due 3/16/26/ to KT Arctic Cat 4525**
- **Selling Full Interest and Possession**

Lot 21A SAV BLACKCAP MAY 5024

Birth Date: 1/18/25 • COW Pending • Tattoo: 5024

#*Sitz Stellar 726D
***SITZ Incentive 704H**
 19677938 #*SITZ Barbaramere Nell 53F

+*S A V Downpour 8794
+S A V Blackcap May 0583
 19810891 #+*S A V Blackcap May 1808

CED	BW	WW	YW	SC	Milk	MB	RE
-----	----	----	----	----	------	----	----

• BW: 73 Adj WW: 636

#*Mohnen Substantial 272
 *SITZ Pride 200B
 *Sitz Invasion 574D
 SITZ Barbaramere Nell 105D
 #+*S A V Rainfall 6846
 #*S A V Madame Pride 4407
 #S A V Net Worth 4200
 #+S A V May 2397

- This heifer is sired by SITZ Incentive 704H, who was the all-time record setter in the Sitz program topping their 2021 female sale.
- Her dam is the powerful SAV Blackcap May 0583, stemming back to SAV Blackcap May 1808. Expect this one to keep getting better and better and find her on sale day.

Lot
22

ZWT BLACKCAP MAY 4537

Birth Date: 09/03/24 • COW +*21307562 • Tattoo: 4537

#+S A V Bismarck 5682
Bar-E-L Natural Law 52Y
19310190 Bar-E-L Magnolia 143K

#+*LD Capitalist 316
+*BRMF Blackcap May 1234-9127
19706748 *S A V Blackcap May 1234

#+*G A R Grid Maker
S A V Abigale 0451
Bar E L MCC 365 Icon 20H
Double Four Duchess 12G
#*Connealy Capitalist 028
LD Dixie Erica 2053
#S A V Net Worth 4200
*S A V Blackcap May 4136

CED	BW	WW	YW	SC	Milk	MB	RE
+6	+2.2	+65	+119	+1.19	+24	+0.29	+0.61

• BW: 88 ET Adj WW: 606

- This heifer here is at the top of our list so make sure to take a good long look.
- Her donor dam is a big-time up and comer in the program and has developed into one of the most eye-appealing and powerful daughters of LD Capitalist 316.
- Her sire is Bar-E-L Natural Law 52Y who we consider to be one of the top maternal sires in the breed. He has definitely worked in our program. This heifer will be a top notch cow and potential donor down the road.
- *Sells open and ready to breed.*



ZWT BLACKCAP MAY
4537 – Lot 22



LD CAPITALIST 316 –
MATERNAL GRANDSIRE
Lots 22 & 22A

Lot
22A

ZWT BLACKCAP MAY 5091

Birth Date: 02/04/25 • COW +*21337730 • Tattoo: 5091

+*S A V Bloodline 9578
+*S A V Blueprint 2933
20478145 *S A V Emblynette 5377

#+*LD Capitalist 316
+*BRMF Blackcap May 1234-9127
19706748 *S A V Blackcap May 1234

#+*S A V Rainfall 6846
#*S A V Emblynette 2369
#+*S A V Renown 3439
*S A V Emblynette 0084
#*Connealy Capitalist 028
LD Dixie Erica 2053
#S A V Net Worth 4200
*S A V Blackcap May 4136

CED	BW	WW	YW	SC	Milk	MB	RE
+2	+2.4	+71	+130	+0.73	+29	+0.2	+0.66

• BW: 87 ET Adj WW: 678

- An attractive daughter from the up-and-coming donor BRMF Blackcap May 1234-9127 who boasts a production record of BR 3@98, WR 3@110, and YR 2@110.
- This heifer is a good representation of our resident herd sire, SAV Blueprint 2933's ability to sire style and muscle shape. Find her on sale day because this female should have a very productive life ahead of her.



S A V BLUEPRINT 2933 – SIRE Lot 22A



ZWT BLACKCAP MAY
5091 – Lot 22A



BRMF BLACKCAP MAY
1234-9127 – DAM Lots
22 & 22A

MOHNEN MADAME PRIDE 279



Lot
24

MOHNEN MADAME PRIDE 279

Birth Date: 12/10/18 • COW +*19486379 • Tattoo: 279

#*Connealy Capitalist 028	#*S A V Final Answer 0035
#+*LD Capitalist 316	Prides Pita of Conanga 8821
17666102	LD Dixie Erica 2053
	#C A Future Direction 5321
	LD Dixie Erica Oar 0853
#S A V 8180 Traveler 004	#Sitz Traveler 8180
*S A V Madame Pride 5290	+Boyd Forever Lady 8003
15108042	#+S A F 598 Bando 5175
S A V Madame Pride 0075	S A V Madame Pride 8264

CED	BW	WW	YW	SC	Milk	MB	RE
+8	+1.1	+77	+124	+1.25	+30	+41	+44

• DONOR COW!

- A powerful daughter sired by the proven AI sire LD Capitalist 316 back to the featured matron, SAV Madame Pride 5290 who has a production record WR6@108, YR 3@105, and is a maternal sister to SAV America, SAV Supercharger and SAV Response.
- She is bred to calve to our new and up and coming herd sire, 2S Super Cell L30, a powerful son of the prolific and now deceased Erica of Ellston T220.
- **Due 1/22/26 to 2S Super Cell L30 • Selling full interest and possession**



LD CAPITALIST 316 – SIRE

PROVEN DONOR



ZWT MADAME PRIDE 4727 – Lot 24A

Lot 24A
ZWT MADAME PRIDE 4727

Birth Date: 11/08/24 • BULL *21367273 • Tattoo: 4727

+*S A V Bloodline 9578 #+*S A V Rainfall 6846
 #*S A V Emblynette 2369
 #+*S A V Renown 3439
 *S A V Emblynette 0084
 #+*LD Capitalist 316
 #*Connealy Capitalist 028
 LD Dixie Erica 2053
 #S A V 8180 Traveler 004
 S A V Madame Pride 0075

+*Mohnen Madame Pride 279
 19486379 *S A V Madame Pride 5290

CED	BW	WW	YW	SC	Milk	MB	RE
-1	+3.5	+75	+131	+0.62	+31	+0.35	+0.62

- BW: 91 Adj WW: 618 Ratio: 111
- Dam's WWR 3/103
- This stout, powerful female by SAV Blueprint 2933 has an eye catching look and great performance.
- She is a November born heifer that has really done well. A true testament to her powerful dam, Madame Pride 279.
- **Sells open and ready to breed.**



ZWT BLACKCAP MAY 4047 – Lot 25

Lot 25
ZWT BLACKCAP MAY 4047

Birth Date: 02/10/24 • COW 21011176 • Tattoo: 4047

#*Bar R Jet Black 5063 #*Connealy Black Granite
 Bar R Iris Anita 0113
 #*Sitz Top Game 561X
 #JMB Maxine Deluxe 9034
 #+*Basin Payweight 1682
 21AR O Lass 7017
 #S A V 8180 Traveler 004
 +S A V May 2351

+*Pilgrim Blackcap May 1017
 19581409 *S A V Blackcap May 5403

CED	BW	WW	YW	SC	Milk	MB	RE
+8	+1.7	+83	+137	+1.07	+25	+0.69	+0.57

- BW: 74 Adj WW: 732
- Solid bred heifer out of the dynamic Blackcap May cow family that produced SAV Blackcap May 4136. Sure to make a great cow.
- Her sire, LAR Man In Black, is recognized as a breed leader for growth while adding above average marbling and foot quality.
- **Due to Basin True Grit 1/29/26**



ZWT BLACKCAP MAY 4708 – Lot 25A

Lot 25A
ZWT BLACKCAP MAY 4708

Birth Date: 10/31/24 • COW *21305789 • Tattoo: 4708

+*KR Casino 6243 #CFCC Black Jack 001
 #*Malsons Savannah 27Y
 #S A V 8180 Traveler 004
 S A V Elba 1094
 #+*S A V Renown 3439
 +*Coleman Donna 714
 #+*S A V Recharge 3436
 *Siebring Blackcap May 473

+*ZWT MGM Grand 2060
 20447282 S A V Elba 5383
 +*ZWT Summitt 6507
 #+*ZWT Blackcap May 0238
 21268852 *Siebring Blackcap May 773

CED	BW	WW	YW	SC	Milk	MB	RE
+7	+0.9	+73	+121		+27	+0.38	+0.45

- BW: 73 Adj WW: 620 Ratio: 113
- Dam's WWR 2/107
- Offering up a special one here out of our home-grown herd sire MGM Grand 2060. The dam of this bull was SAV Elba 5383 who lived to be 19 years old when we lost her last year. On top of that the great granddam is Siebring Blackcap May 473, one of the great Final Answer 0035 daughters to grace our pastures.
- This heifer here comes with a great disposition, pedigree full of great cows and built for the long haul.
- **Sells open and ready to breed.**



LAR MAN IN BLACK – SIRE Lot 24



SIEBRING BLACKCAP MAY 473 – GREAT GRANDDAM Lot 24A



ZWT JOANIE 4542



Lot 26

ZWT JOANIE 4542

Birth Date: 09/05/24 • COW +*21307564 • Tattoo: 4542

*S A V Territory 7225 #+*S A V Resource 1441
 +*S A V Throttle 2961 #S A V Emblynette 3293
 20480748 #+*S A V Madame Pride 8375 #+*S A V President 6847
 #*S A V Madame Pride 4407
 #*Connealy Final Product *Connealy Product 568
 #Mill Brae FP Joanie 3063 #Ebonista of Conanga 471
 17630369 #Mill Brae FA Joanie 9263 #*S A V Final Answer 0035
 +Mill Brae Joanie Ferd 903

CED	BW	WW	YW	SC	Milk	MB	RE
+2	+2.7	+78	+138	+1.22	+25	+0.24	+0.74

- BW: 81 ET Adj WW: 642 Ratio: 104
- Dam's WWR 7/103 YWR 7/106
- This fall yearling heifer is straight from the heart of our embryo program and is deserving to be at the top of any replacement pen.
- Her sire is the \$100,000 SAV Throttle 2961 serving as a staple in the Voss Angus and Schaff Angus Vallley programs.
- Be sure to study this heifer on sale day. Tremendous value in this female.
- **Sells open and ready to breed.**



MILL BRAE FP JOANIE 3063 – DAM



S A V THROTTLE 2963 – SIRE



ZWT JOANIE 4137 – Lot 27A

- Two very attractive Joanie bred heifers and still the most rock-solid female mating out of 3063.
- They are sired by the Semex AI sire, SAV Renovation 6822, a bull that has a proven maternal track record. Be sure to find these as they are high quality and could find their way to the donor pen in the future.

Lot 27A

ZWT JOANIE 4137

Birth Date: 03/03/24 • COW +*21010534 • Tattoo: 4137

#+*S A V Renown 3439
 +*S A V Renovation 6822
 18579309 +*S A V Madame Pride 0151

+Rito 707 of Ideal 3407 7075
 *S A V Blackcap May 4136
 #+S A V 004 Density 4336
 S A V Madame Pride 0075
 *Connealy Product 568
 #Ebonista of Conanga 471
 #*S A V Final Answer 0035
 +Mill Brae Joanie Ferd 903

#*Connealy Final Product
 #Mill Brae FP Joanie 3063
 17630369 #Mill Brae FA Joanie 9263

CED	BW	WW	YW	SC	Milk	MB	RE
+4	+2.3	+70	+126	+1.23	+23	+0.38	+0.35

- BW: 88 ET Adj WW: 671
- Due to Mohnen Substantial 1/29/26



MILL BRAE FP JOANIE 3063 – DAM



ZWT JOANIE 4187 – Lot 27B

Lot 27B

ZWT JOANIE 4187

Birth Date: 03/09/24 • COW +*21283524 • Tattoo: 4187

#+*S A V Renown 3439
 +*S A V Renovation 6822
 18579309 +*S A V Madame Pride 0151

+Rito 707 of Ideal 3407 7075
 *S A V Blackcap May 4136
 #+S A V 004 Density 4336
 S A V Madame Pride 0075
 *Connealy Product 568
 #Ebonista of Conanga 471
 #*S A V Final Answer 0035
 +Mill Brae Joanie Ferd 903

#*Connealy Final Product
 #Mill Brae FP Joanie 3063
 17630369 #Mill Brae FA Joanie 9263

CED	BW	WW	YW	SC	Milk	MB	RE
+3	+1.5	+64	+126	+1.68	+26	+0.45	+0.51

- BW: 83 ET Adj WW: 692
- Due to HF Ringo 338 2/20/26

ZWT JUDY 4005



Lot 28 **ZWT JUDY 4005**
 Birth Date: 01/14/24 • COW +*21008331 • Tattoo: 4005

*S A V Renew 8132 #+*S A V Renown 3439
 +*S A V Blackcap May 4593
***KLA Respect 186** 20047598 +*KLA Forever Lady 7190 #S A V Net Worth 4200
 *Kla Forever Lady 125
 #*KG Justified 3023 Connealy Judgment
***Bear Mtn Judy 6535** 18583302 Bear Mtn Judy 3092 #S A V Pioneer 7301
 Bear Mtn Judy 0133

CED	BW	WW	YW	SC	Milk	MB	RE
+1	+3.1	+86	+139	+1.38	+28	+0.79	+0.62

- BW: 83 ET
- Dam's BWR 4/99 WWR 4/110
- This incredible bred heifer is certainly a sale feature. She is sired by our resident go-to power herd sire, KLA Respect 186, who is proven to inject power and maternal.
- The dam of this heifer is Bear Mtn Judy 6535, a full sib to ST Genetics AI sire Bear Mtn Justify. She has a production record of BR 4@99 and WR 4@110.
- If you are looking for a young female to build around then look no further!
- Selling full interest and possession!
- **Due to HF Ringo 338 2/20/26**



BEAR MTN JUDY 6535 – DAM

SALE FEATURE!



ZWT ELBA 3562 – Lot 29

Lot 29

ZWT ELBA 3562

Birth Date: 09/19/23 • COW 21109545 • Tattoo: 3562

#+*S A V Rainfall 6846
 #+*S A V Bloodline 9578
 19542324 #*S A V Emblynette 2369
 #+*S A V Sensation 5615
ZWT Elba 7246
 18905577 +S A V Elba 171

#+*Coleman Charlo 0256
 *S A V Blackcap May 4136
 #+*S A V 707 Rito 9969
 +*S A V Emblynette 7566
 #+*S A V Registry 2831
 *S A V Blackcap May 4136
 #+S A V Bismarck 5682
 +S A V Elba 801

CED	BW	WW	YW	SC	Milk	MB	RE
-5	+4.1	+65	+122		+25	+0.48	+0.36

- **BW: 87 Adj WW: 594 Ratio: 97**
- Dam's WWR 3/98
- This stout, powerful bred heifer by SAV Bloodline 9578 is a true breeding piece. She stems back to SAV Elba 171 a former donor in our program
- Quite possibly the stoutest bred female in the sale. Make sure to find her on sale day.
- **Due to Musgrave Colossal 137 1/29/26**



ZWT ELBA 4736 – Lot 29B

Lot 29A

ZWT ELBA 351

Birth Date: 11/02/23 • COW +*21328851 • Tattoo: 351

#+*S A V Renown 3439
 #+*ZWT Summitt 6507
 18561289 +*Coleman Donna 714

#+*S A V Heritage 6295
 #+*S A V Elba 918
 16393111 S A V Elba 1094

+Rito 707 of Ideal 3407 7075
 *S A V Blackcap May 4136
 #*Connealy Onward
 +*Coleman Donna 386
 #CAR Duke 104
 *S A V Blackcap May 4136
 #+S A F 598 Bando 5175
 S A V Elba 7099

CED	BW	WW	YW	SC	Milk	MB	RE
+4	+1.9	+52	+90	+0.12	+31	-0.04	+0.44

- **BW: 78 ET**
- Dam's WWR 6/99 YWR 4/102
- **MATERNAL!** This bred heifer is the definition of maternal and was bred with longevity in mind. Her dam, SAV Elba 918, is a former donor in the program and is now deceased. So, it's special to offer this genetic piece out of her.
- She is sired by ST Genetics AI Sire and former ZWT top seller, ZWT Summitt 6507. The blending of Elba and Donna cow families here is a lock for success.
- **Due to Mohnen Substantial 1/29/26**



ZWT ELBA 351 – Lot 29A

Lot 29B

ZWT ELBA 4736

Birth Date: 11/14/24 • COW 21306766 • Tattoo: 4736

#+*S A V Bloodline 9578
 #+*S A V Blueprint 2933
 20478145 *S A V Emblynette 5377

#+*S A V Rainfall 6846
 #*S A V Emblynette 2369
 #+*S A V Renown 3439
 *S A V Emblynette 0084
 #+*Coleman Charlo 0256
 *S A V Blackcap May 4136
 #+*S A V Renown 3439
 +S A V Elba 171

CED	BW	WW	YW	SC	Milk	MB	RE
-3	+4	+76	+138	+	+31	+0.28	+0.77

- **BW: 88 Adj WW: 654 Ratio: 119**
- Dam's WWR 3/113
- A featured heifer sired by resident herd sire SAV Blueprint 2933 and out of a dam who has a solid production record with WR 3@113 and YR 1@109.
- **Sells open and ready to breed.**



ZWT ELBA 5025 – Lot 30



ZWT ELBA 4544 – Lot 30A

Lot 30A

ZWT ELBA 4544

Birth Date: 09/05/24 • COW 21309772 • Tattoo: 4544

#+*S A V Renown 3439
 19639204 Bar-E-L Erica 74A

#+*Blair's Rocco 268F
 19639204 Bar-E-L Erica 74A

#+*Basin Payweight 1682
 #+*ZWT Elba G051
 21054081 +S A V Elba 171

+Rito 707 of Ideal 3407 7075
 *S A V Blackcap May 4136
 Bar-E-L Natural Law 52Y
 HF Erica 339T

#+*Basin Payweight 0065
 21AR O Lass 7017
 #+S A V Bismarck 5682
 +S A V Elba 801

CED	BW	WW	YW	SC	Milk	MB	RE
+0	+3	+59	+112		+30		

- **BW: 85 Adj WW: 545 Ratio: 97**
- Another Elba daughter stemming back to SAV Elba 171. This heifer is sired by the son of SAV Renown 3439, Blairs Rocco 268F.
- The injection of Blackcap May 4136 and Bar-E-L Erica 74A from the top side here is adding some potency.
- **Sells open and ready to breed.**

Lot 30

ZWT ELBA 5025

Birth Date: 01/19/25 • COW *21359543 • Tattoo: 5025

#+*S A V Rainfall 6846
 20480732 #*S A V Madame Pride 4407

#+*Coleman Charlo 0256
 *S A V Blackcap May 4136
 #+*S A V Resource 1441
 +*S A V Madame Pride 0235

+*Brooking Major 7103
 #*S A V International 2020
 *Soo Line Rose 1019
 #+S A V Bismarck 5682
 +S A V Elba 801

CED	BW	WW	YW	SC	Milk	MB	RE
+9	+0.7	+59	+104		+28	+0.44	+0.66

- **BW: 70 Adj WW: 691 Ratio: 105**
- Dam's WWR 3/112
- This high performing heifer is sired by SAV Riverside 2381 and out of one our cherished Brooking Major 7103 daughters.
- Stems back to the former ZWT donor SAV Elba 171. Find her on sale day.



ZWT ELBA 4567 – Lot 30B

Lot 30B

ZWT ELBA 4567

Birth Date: 09/09/24 • COW *21306757 • Tattoo: 4567

#+*S A V Rainfall 6846
 20480732 #*S A V Madame Pride 4407

#+*Coleman Charlo 0256
 *S A V Blackcap May 4136
 #+*S A V Resource 1441
 +*S A V Madame Pride 0235

+*Coleman Resolve 7219
 #+*S A V Renown 3439
 +*Coleman Donna 714
 #+*S A V Angus Valley 1867
 +S A V Elba 801

CED	BW	WW	YW	SC	Milk	MB	RE
+6	+2	+68	+129		+21		

- **BW: 73 Adj WW: 599 Ratio: 107**
- Dam's WWR 1/107
- A nice heifer here out of a 2 year old dam, sired by SAV Riverside 2381, the full brother to SAV Downpour 8794.
- Study the cows in this pedigree, SAV Blackcap May 4136, SAV Madame Pride 4407, Coleman Donna 714 and SAV Elba 801.
- **Sells open and ready to breed.**



S A V RIVERSIDE 2381 – SIRE Lot 30



BLAIR'S ROCCO 268F – SIRE Lot 30A



ZWT SUMMIT 6507 – SIRE Lot 31A



LAFLINS MARVEL 1801 – SIRE Lot 32B



ZWT RENDITION 3039 –
 MATERNAL SIBLING Lots 32 & 32A



ZWT EMBLYNETTE 3118 – Lot 31



ZWT EMBLYNETTE 4002 – Lot 31A



ZWT EVERELDA ENTENSE 3096 – Lot 32



BROOK EVER ENTENSE 9523 – DAM Lots 32 & 32A



ZWT EVERELDA ENTENSE 5036 – Lot 32A



ZWT EVER ENTENSE 3720 – Lot 32B

Lot 31 ZWT EMBLYNETTE 3118

Birth Date: 03/01/23 • COW *20689562 • Tattoo: 3118

#*S A V International 2020
+*Brooking Major 7103
 19148779 *Soo Line Rose 1019

#+*S A V 707 Rito 9969
+*S A V Emblynette 2664
 17294184 +S A V Emblynette 3301

#*S A V Harvester 0338
 #+*S A V Emblynette 5483
 #*Soo Line Motive 9016
 #E A Rose 918
 +Rito 707 of Ideal 3407 7075
 BR Polly 8077-472
 #+S A F 598 Bando 5175
 #S A V Emblynette 7319

CED	BW	WW	YW	SC	Milk	MB	RE
-1	+2.4	+62	+106	+1.03	+31	+0.34	+0.60

- BW: 77 Adj WW: 736
- A young daughter sired by Sr herd sire, Brooking Major 7103, our proven son of Soo Line Rose 1019.
- This female stems back to the prolific Schaff Angus Valley donor, SAV Emblynette 3301, the mother to former ZWT herd sire SAV Hesston 2217. Nice blending of cow families that should make for a good cow down the road.
- **Heifer Calf born 9/9/25 by ZWT Summitt 6507**

Lot 31A ZWT EMBLYNETTE 4002

Birth Date: 01/12/24 • COW 21051590 • Tattoo: 4002

#+*S A V Renown 3439
+*ZWT Summitt 6507
 18561289 +*Coleman Donna 714

+*S A V Scale House 0845
Voss Emblynette 2129
 20301408 +S A V Emblynette 4592

+Rito 707 of Ideal 3407 7075
 *S A V Blackcap May 4136
 #*Connealy Onward
 +*Coleman Donna 386
 *Marcys Scale Crusher
 +*S A V Blackcap May 1416
 #S A V Pioneer 7301
 +*S A V Emblynette 7566

CED	BW	WW	YW	SC	Milk	MB	RE
+4	+2.8	+75	+130	+0.71	+20	+0.39	+0.66

- BW: 75 Adj WW: 667 Ratio: 105
- Dam's WWR 1/105
- A solid bred heifer sired by our maternal go-to sire, ZWT Summitt 6507.
- This female stems back to the same cow family that produced the prolific SAV Emblynette 2369.
- **Due to HF Ringo 338 2/20/26**

Lot 32 ZWT EVERELDA ENTENSE 3096

Birth Date: 02/22/23 • COW +*20705751 • Tattoo: 3096

*S A V Renew 8132
***KLA Respect 186**
 20047598 +*KLA Forever Lady 7190

#+*Deer Valley Growth Fund
***Shady Brook Everelda 9523**
 19731957 *Shady Brook Everelda 7506

#+*S A V Renown 3439
 +*S A V Blackcap May 4593
 #S A V Net Worth 4200
 *Kla Forever Lady 125
 #+*Basin Payweight 1682
 +*Deer Valley Rita 36113
 #+*Coleman Charlo 0256
 +*Shady Brook Everelda 5511

CED	BW	WW	YW	SC	Milk	MB	RE
-3	+5.0	+92	+161	+1.55	+32	+0.59	+0.85

- BW: 90 ET Adj WW: 677
- Powerful and a real breeding piece. This female is a maternal sibling to last years high selling bull, ZWT Rendition 3039, who sold for \$80,000 to Voss Angus.
- She is sired by KLA Respect 186. The growth and performance here is unmatched.
- **Heifer Calf born 9/9/25 by Coleman Bravo 6313**

Lot 32A ZWT EVERELDA ENTENSE 5036

Birth Date: 01/22/25 • COW +*21338734 • Tattoo: 5036

#*Sitz Stellar 726D
***SITZ Incentive 704H**
 19677938 #*SITZ Barbaramere Nell 53F

#+*Deer Valley Growth Fund
***Shady Brook Everelda 9523**
 19731957 *Shady Brook Everelda 7506

#*Mohnen Substantial 272
 *SITZ Pride 200B
 *Sitz Invasion 574D
 SITZ Barbaramere Nell 105D
 #+*Basin Payweight 1682
 +*Deer Valley Rita 36113
 #+*Coleman Charlo 0256
 +*Shady Brook Everelda 5511

CED	BW	WW	YW	SC	Milk	MB	RE
+6	+2	+80	+143	+0.75	+30	+0.66	+0.6

- BW: 75 ET Adj WW: 683
- This high performing heifer is out of Shady Brook Everelda 9523 who was a feature in last years Fully Loaded Sale and sold for \$20,000 one half interest for a \$40,000 valuation to Bredemair Angus of Stella, NE.
- Her sire is SITZ Incentive 704H, who was the all-time record setter in the Sitz program topping their 2021 female sale.
- Be sure to find this unique breeding piece.

Lot 32B ZWT EVER ENTENSE 3720

Birth Date: 11/08/23 • COW *21277969 • Tattoo: 3720

#+*PVF Insight 0129
***Laffins Marvel 1801**
 19091613 Laffins Galaxie 3332

+*Duff New Edition 6108
+*C-4 Ever Entense X131
 19812196 +Shadybrook Ever Entense 491G

#*S A V Brilliance 8077
 +*PVF Missie 790
 +EXAR Consensus 1972B
 Laffins Galaxie 1241
 +*O C C Genesis 872G
 O C C Dixie Erica 814G
 #Traveler 124 G D A R
 Sitz Everelda Entense 1137

CED	BW	WW	YW	SC	Milk	MB	RE
+3	+2.9	+52	+91		+19		

- BW: 80 Adj WW: 606
- A beautiful, bred heifer by Laffins Marvel 1801 the former resident herd sire.
- This heifers dam is a direct daughter of the legendary Shadybrook Everelda Entense 491G. Could be a top-notch piece here.
- **Due to Basin True Grit 1/29/26**



ZWT KINOCHTRY BEAUTY 3600 – Lot 33

Lot
33

ZWT KINOCHTRY BEAUTY 3600

Birth Date: 09/16/23 • COW 21010099 • Tattoo: 3600

*Brooking Bank Note 4040
+*Brooking Gold Coin 8069
 19377658 S A V Emblynette 4223

*Reisig Safe Guard 728
***+*ZWT Kinochtry Beauty F002**
 20364032 *+*ZWT Kinochtry Beauty F002

#+*Connealy Earnan 076E
 *E A Rose 918
 #*S A V Harvestor 0338
 +S A V Emblynette 1786
 +*Buford Osage A932
 +*Reisig Elba 3000
 +*Buford Fort Knox A410
 N Bar Kinochtry Beauty F4439

CED	BW	WW	YW	SC	Milk	MB	RE
+4	+3.5	+83	+138		+18	+0.38	+0.45

- BW: 84 Adj WW: 701 Adj YW: 1058
- A stout, powerful daughter of Brooking Gold Coin with a great udder. She will run with the best of them
- Front end brood cow potential in this one that goes back to the famous Kinochtry Beauty cow family.
- *Heifer Calf born 9/7/25 by Musgrave Jumbo*

Lot 33A ZWT KINOCHTRY BEAUTY 4090

Birth Date: 02/22/24 • COW 21283520 • Tattoo: 4090

#*S A V International 2020
+*Brooking Major 7103
 19148779 *Soo Line Rose 1019

+*S A V Receptor 4837
ZWT Kinochtry Beauty 6341
 18556043 N Bar Kinochtry Beauty J2311

#*S A V Harvestor 0338
 #+*S A V Emblynette 5483
 #*Soo Line Motive 9016
 *E A Rose 918
 #+*S A V Registry 2831
 *S A V Blackcap May 4136
 #*N Bar Emulation EXT
 N Bar Heiress A1389

CED	BW	WW	YW	SC	Milk	MB	RE
-7	+5.5	+59	+102		+25		

- BW: 100
- A stout, powerful bred heifer sired by Brooking Major 7103 that is sure to make a brood cow.
- This heifers grandam served as a donor in our program and lived to be 20 years old before we parted with her.
- *Due to Mohnen Substantial 2/20/26*



BROOKING MAJOR 7103 – SIRE



ZWT KINOCHTRY BEAUTY 4090 – Lot 33A



BIG TIME SALE FEATURE!

ZWT PRIDE 4054 – Lot 34



S A V RAINFALL 6846 – SIRE Lot 34

Lot 34 ZWT PRIDE 4054

Birth Date: 02/14/24 • COW 21283518 • Tattoo: 4054

#+*Coleman Charlo 0256
 #+*S A V Rainfall 6846
 18578963 *S A V Blackcap May 4136

#*O C C Paxton 730P
 +Bohi Abigale 6014
 #S A V 8180 Traveler 004
 #+S A V May 2397
 +Rito 707 of Ideal 3407 7075
 BR Polly 8077-472
 #Rito 616 of 4B20 6807
 Thomas Pride 1175

+*S A V 707 Rito 9969
 +ZWT Pride 3504
 17873285 Thomas Pride 3644

CED	BW	WW	YW	SC	Milk	MB	RE
+3	+1	+62	+114	+0.76	+32	+0.4	+0.34

- BW: 86 Adj WW: 616 Ratio: 112 **BIG TIME SALE FEATURE!**
- Dam's BWR 6/97 WWR 4/106
- This bred heifer, sired by SAV Rainfall 6846, is of the elite kind. Her presence out in the pasture is unmatched. She has been the favorite of many ranch visitors.
- Her dam boasts a production record of BR 6@97 and WR 4@106 stems back to the proven Pride cow family.
- **Due to DHD Traveler 6807 2/20/25**

Lot 34A ZWT PRIDE 3747

Birth Date: 10/22/23 • COW 21010108 • Tattoo: 3747

#+*PVF Insight 0129
 *Lafllins Marvel 1801
 19091613 Lafllins Galaxie 3332

#*S A V Brilliance 8077
 +*PVF Missie 790
 +EXAR Consensus 1972B
 Lafllins Galaxie 1241
 #+*S A V Renown 3439
 +*Coleman Donna 714
 +*ZWT Rawhide 2735
 ZWT Pridde 6457

+*ZWT Summit 6507
 ZWT Pride 0564
 20364041 ZWT

CED	BW	WW	YW	SC	Milk	MB	RE
+7	+1.5	+61	+104		+18	+36	+1.06

- BW: 77 Adj WW: 623 WW Ratio: 102 Adj YW: 879
- The Marvel x Summit cross looks to have made a solid cow. Should make a nice cow to add to your fall calving herd.
- **Bull Calf born 9/15/25 by Rust Forged of Fire 53K**

Lot 34B ZWT PRIDE 4119

Birth Date: 2/29/24 • COW 21283514 • Tattoo: 4119

#+*PVF Insight 0129
 *Lafllins Marvel 1801
 19091613 Lafllins Galaxie 3332

#*S A V Brilliance 8077
 +*PVF Missie 790
 +EXAR Consensus 1972B
 Lafllins Galaxie 1241
 #+*LD Capitalist 316
 #MCATL Blackbird 831-1378
 #*Connealy Consensus 7229
 +*Sitz Henrietta Pride 643T

#*Musgrave 316 Stunner
 +*Whitestone Pride 1148
 20013692 +*PF Henrietta Pride 5634

CED	BW	WW	YW	SC	Milk	MB	RE
+0	+4.3	+67	+119	I+.65	+21	I+.48	I+.99

- BW: 94 BW Ratio: 123 Adj WW: 660 WW Ratio: 103
- A solid bred heifer sired by Lafllins Marvel 1801. This female stems back to the great matron Sitz Henrietta Pride 643T.
- **Due to HF Ringo 338 2/20/26**



ZWT BLACKCAP 3227 – Lot 36



ZWT ERICA 5043 – Lot 35

DEER VALLEY BIG JON 022 – SIRE Lot 36



ZWT ERICA 4527 – Lot 35A



Lot 35

ZWT ERICA 5043

Birth Date: 01/25/25 • COW 21337718 • Tattoo: 5043

#+*S A V Rainfall 6846 #+*Coleman Charlo 0256
 *S A V Blackcap May 4136
+*S A V Riverside 2381 #+*S A V Resource 1441
 20480732 #*S A V Madame Pride 4407 #+*S A V Madame Pride 0235
 +Rito 707 of Ideal 3407 7075
 #+*S A V Renown 3439 *S A V Blackcap May 4136
+Blair's Erica 541L Bar-E-L Natural Law 52Y
 20852008 Bar-E-L Erica 74A HF Erica 339T

CED	BW	WW	YW	SC	Milk	MB	RE
+7	+0.1	+61	+115	+1.16	+24	+0.41	+0.72

- BW: 66 Adj WW: 601
- The hidden gem of the sale offering, sired by SAV Riverside 2381. This female is the first calf off Blairs Erica 541L, the Renown daughter out of Bar-E-L Erica 74A.
- This one will age like fine wine, don't miss out here.

Lot 35A

ZWT ERICA 4527

Birth Date: 09/01/24 • COW 21312959 • Tattoo: 4527

+*S A V Bloodline 9578 #+*S A V Rainfall 6846
+*ZWT Blue Blood 1508 #*S A V Emblynette 2369
 20304546 *E A Rose 918 #*S A V Final Answer 0035
 E A Rose 738
 #*MAR Innovation 251 #*Connealy Impression
Bear Mtn Erica 6516 #*MAR Final Kahuna 856
 18583288 Bear Mtn Erica 1012 #Vin-Mar O'Reilly Factor
 +Bear Mtn Erica 9080

CED	BW	WW	YW	SC	Milk	MB	RE
-1	+2.7	+75	+131	+0.94	+21	+0.59	+0.67

- BW: 83 Adj WW: 610 Ratio: 109
- Dam's WWR 3/98
- A daughter of ZWT Blue Blood 1508 the high selling bull of the 2023 Fully Loaded Sale that went to Shady Brook Angus Farm and Pleasant Hil.
- Get in on these Blue Blood daughters.
- **Sells open and ready to breed.**

Lot 36

ZWT BLACKCAP 3227

Birth Date: 03/21/23 • COW *21021449 • Tattoo: 3227

#+*Deer Valley Growth Fund #+*Basin Payweight 1682
***Deer Valley Big Jon 022** #+*Deer Valley Rita 36113
 19738682 Stika Erica 0743 #*JMB Traction 292
 Stucky Erica 0310
 #*S A V International 2020
 +*Brooking Major 7103 *Soo Line Rose 1019
ZWT Blackcap 0613 Buford Black Impulse B579
 21019959 ZWT Blackcap 7970 ZWT Blackcap 2575

CED	BW	WW	YW	SC	Milk	MB	RE
+10	+1.2	+67	+118		+28		

- BW: 71 Adj WW: 740
- This young daughter sired by Deer Valley Big Jon 022 will make a nice addition to any fall calving herd. Her udder quality is sublime, good young cow here.
- **Heifer Calf born 8/31/25 by ZWT Summitt 3507**

Lot 36A

ZWT BLACKCAP 3571

Birth Date: 09/25/23 • COW 21010095 • Tattoo: 3571

#+*PVF Insight 0129 #*S A V Brilliance 8077
***Laffins Marvel 1801** #+*PVF Missie 790
 19091613 Laffins Galaxie 3332 +EXAR Consensus 1972B
 Laffins Galaxie 1241
 #S A V Net Worth 4200
 #S A V Emblynette 3301
 #*Soo Line Motive 9016
 OCC Lady Blackcap 753L

CED	BW	WW	YW	SC	Milk	MB	RE
+4	+2.7	+58	+105		+21	+0.01	+0.99

- BW: 84 Adj WW: 607 Adj YW: 948 Ratio: 103
- Dam's WWR 3/103
- A very useful bred heifer sired by Laffins Marvel 1801 that stems back to former foundation donor OCC Lady Blackcap 753L.
- **Due to HF Ringo 338 1/29/26**



ZWT LADY 4534
– Lot 37

Lot
37

ZWT LADY 4534

Birth Date: 09/02/24 • COW *21309769 • Tattoo: 4534

#+*S A V Renown 3439
+*Blair's Rocco 268F
19639204 Bar-E-L Erica 74A

+Rito 707 of Ideal 3407 7075
*S A V Blackcap May 4136
Bar-E-L Natural Law 52Y
HF Erica 339T

+*S A V First Prize 3642
ZWT Lady 9573
19893306 +ZWT Lady 5594

*S A V First Class 0207
+S A V Emblynette 3301
#+MF Net Return 8197
#+*Sinclair Lady 3M19 4465

CED	BW	WW	YW	SC	Milk	MB	RE
-1	+2.4	+67	+116		+30	+0.23	+0.58

- BW: 79 Adj WW: 620 Ratio: 111
- A powerful daughter sired by Blairs Rocco 268F from a dam that boasts a production record of WR 4@110 and YR 3@108.
- Don't overlook this female and make sure to study the cows in the pedigree. The recipe for success is at the forefront.
- **Sells open and ready to breed.**



ZWT ISABEL 4526 – Lot 38

Lot
38

ZWT ISABEL 4526

Birth Date: 08/31/24 • COW *21306750 • Tattoo: 4526

#+*Plattemere Weigh Up K360
#J&J Weigh Up 294
18004546 J & J Miss Georgina 294

#+*Sitz Upward 307R
#Barbara of Plattemere 337
#TC Romeo 917
J&J Miss Georgina 927

+*Poss Rawhide
***ZWT Isabel 2598**
21062150 +*KC Isabel 9030

#+*Poss Maverick
+*Poss Blueblood 6502
#+*Bar R Jet Black 5063
+*Wellington Isabel P113

CED	BW	WW	YW	SC	Milk	MB	RE
+9	+0.2	+65	+116		+22		

- BW: 68 Adj WW: 505
- This stout made heifer represents the J&J Weigh Up 294 progeny well and the pedigree stems back to the beginnings of the great Baldrige Isabel Y69.
- This heifer will be a great addition.
- **Sells open and ready to breed.**



ZWT ROSETTA 4154 – Lot 41



S A V BLUEPRINT 2933 –SIRE Lot 41



ZWT DECLARATION 1551 –SIRE Lot 43

Lot 41

ZWT ROSETTA 4154

Birth Date: 03/05/24 • COW *21283525 • Tattoo: 4154

+*S A V Bloodline 9578
+*S A V Blueprint 2933
 20478145 *S A V Emblynette 5377

#+*S A V President 6847
***Voss Rosetta 0266**
 19768895 *Larsen Rosetta 627

#+*S A V Rainfall 6846
 #*S A V Emblynette 2369
 #+*S A V Renown 3439
 *S A V Emblynette 0084
 #+*Coleman Charlo 0256
 *S A V Blackcap May 4136
 +*S A V Pedigree 4834
 S A V Rosetta 5399

CED	BW	WW	YW	SC	Milk	MB	RE
+1	+2	+59	+112	+0.01	+25	+0.18	+0.74

- BW: 74
- This bred heifer is very balanced in her type and kind. She typifies the Blueprint daughters well and puts it all together in a beautiful package.
- **Due to ZWT Summitt 6507 2/20/26**

Lot 42

ZWT ERISKAY 4105

Birth Date: 02/26/24 • COW 21283535 • Tattoo: 4105

#*Musgrave 316 Exclusive
***ZWT Aristocrat 1502**
 20340429 MF Forever Lady 9134

#+*S A V Rainfall 6846
HCC Ms Eriskay May 82J
 20064024 +*HCC Eriskay May 7883

#+*LD Capitalist 316
 *Musgrave Prim Lassie 163-386
 #+*Deer Valley Growth Fund
 +Bear Mtn Forever Lady 4075
 #+*Coleman Charlo 0256
 *S A V Blackcap May 4136
 #+*S A V Regard 4863
 #+Sinclair Eriskay 2N1 7883

CED	BW	WW	YW	SC	Milk	MB	RE
+3	+3	+66	+120		+25		

- BW: 83 Adj WW: 574 Ratio: 107
- Dam's WWR 3/99
- A daughter that stems back to the Eriskay cow family that is worthy of some attention. This heifers dam has now earned the status of an embryo donor and has a bright future ahead of her.
- **Due to Mohnen Substantial 2/20/26**

Lot 43

ZWT JUANADA 4107

Birth Date: 02/27/24 • COW 21341985 • Tattoo: 4107

#+*Coleman Bravo 6313
***ZWT Declaration 1551**
 20191024 +*Wilks Henrietta Pride 5208

*Lafins Marvel 1801
+ZWT Juanada 2130
 21284138 +*Akers Juanada 9100

#+*Coleman Charlo 0256
 +*Coleman Donna 714
 #+*Quaker Hill Rampage 0A36
 +*SQ 12Y of Henrietta Pride
 #+*PVF Insight 0129
 Lafins Galaxie 3332
 #*N Bar Emulation EXT
 +O C C Juanada 710K

CED	BW	WW	YW	SC	Milk	MB	RE
+6	+3.1	+67	+116		+24		

- BW: 78 Adj WW: 652 Ratio: 102
- Dam's WWR 1/102
- A solid bred heifer to wrap up the female portion of the book. She stems back to the great Akers Juanada 9100, a cow that is worthy of some research.
- She's AI bred and ready to make cow.
- **Due to HF Ringo 338 2/20/26**



ANGUS BULLS LOTS 45-102
SIMMENTAL BULLS LOTS 103-110





ZWT RANGER 3508

Two Year Old Bulls

Lot
45

ZWT RANGER 3508

Birth Date: 09/05/23 • BULL +*21063059 • Tattoo: 3508

#+*Coleman Charlo 0256

#*O C C Paxton 730P

#+*S A V Rainfall 6846

+Bohi Abigale 6014

18578963

*S A V Blackcap May 4136

#S A V 8180 Traveler 004

#+S A V May 2397

#+*S A V Resource 1441

+Rito 707 of Ideal 3407 7075

Pine Coulee Patsy A13

*S A V Blackcap May 4136

17583446

Pine Coulee Patsy X36

BC Classic 385-7

+Pine Coulee Patsy T502

CED	BW	WW	YW	SC	Milk	MB	RE
+3	+2.0	+69	+126	+0.84	+24	+0.61	+0.88

- BW: 82 ET Adj WW: 716
- Dam's WWR 3/103
- Ranger is one of the most complete sons of the prolific Pine Coulee Patsy A13. He is masculine, sound and excellent footed. A maternal brother, ZWT Law & Order 2693, was a sale feature in last years event.
- His sire is the proven SAV Rainfall 6846 making him a full brother to ZWT Patsy 3018 who was a sale feature in the 2023 Fully Loaded Sale that brought \$20,000 for ½ interest, to Rust Mountain View Ranch, totaling a \$40,000 evaluation.
- The daughters out of this bull are going to be incredible and the keeping kind.
- **Selling full possession and retaining 1/3 semen interest.**



PINE COULEE PATSY A13 – DAM Lot 45 & 46



ZWT PATSY 3018 – HIGH SELLING FULL SISTER Lot 45



ZWT ORTIZ 3524 – Lot 46

Lot
46

ZWT ORTIZ 3524

Birth Date: 09/07/23 • BULL +*21054061 • Tattoo: 3524

#+*Hummel South America

19919943 Rubeta Fontana 7567

#+*S A V Resource 1441

Pine Coulee Patsy A13

17583446 Pine Coulee Patsy X36

Don Jose 176 Maxi

Don Aparicio Serranias 57

Consenza Don Roberto 338

Rubeta Fontana 6207

+Rito 707 of Ideal 3407 7075

*S A V Blackcap May 4136

BC Classic 385-7

+Pine Coulee Patsy T502

CED	BW	WW	YW	SC	Milk	MB	RE
+1	+2.7	+77	+132	+0.87	+19	+0.20	+1.01

- BW: 79 ET Adj WW: 696
- Ortiz is another excellent son of Patsy A13, putting her prepotency on full display. This time being sired by outcross genetic sire South America for a little bit of flair!
- This bull stands on an excellent foot and is jam packed with red meat. Be sure to find this bull. He will be a great addition if you're looking for an outcross sire out of a proven donor cow.
- **Selling full possession and retaining 1/3 semen interest.**



ZWT LAW & ORDER 2693 – MATERNAL SIBLING Lot 46

ZWT SUPERIOR 3537





MILL BRAE FP JOANIE 3063 – DAM Lots 47, 48 & 49

Lot
47

ZWT SUPERIOR 3537

Birth Date: 09/11/23 • BULL +*21133217 • Tattoo: 3537

+*S A V Renown 3439
+*Coleman Glacier 041
 19866409 #+*Coleman Donna 439

#*Connealy Final Product
#Mill Brae FP Joanie 3063
 17630369 #Mill Brae FA Joanie 9263

+Rito 707 of Ideal 3407 7075
 *S A V Blackcap May 4136
 #+GDAR Game Day 449
 +*Coleman Donna 714
 *Connealy Product 568
 #Ebonista of Conanga 471
 #*S A V Final Answer 0035
 +Mill Brae Joanie Ferd 903

CED	BW	WW	YW	SC	Milk	MB	RE
+6	+1.8	+73	+128	+0.90	+29	+0.01	+0.70

- BW: 86 ET Adj WW: 837 REA: 110
- Dam's WWR 7/103



MONTANA JUDGEMENT 1038 – \$180,000 MATERNAL BROTHER
 Lots 47, 48 & 49



ZWT SUPREME 3645 – Lot 48

Lot
48

ZWT SUPREME 3645

Birth Date: 10/10/23 • BULL +*21054058 • Tattoo: 3645

+*S A V Renown 3439
+*Coleman Glacier 041
 19866409 #+*Coleman Donna 439

#*Connealy Final Product
#Mill Brae FP Joanie 3063
 17630369 #Mill Brae FA Joanie 9263

+Rito 707 of Ideal 3407 7075
 *S A V Blackcap May 4136
 #+GDAR Game Day 449
 +*Coleman Donna 714
 *Connealy Product 568
 #Ebonista of Conanga 471
 #*S A V Final Answer 0035
 +Mill Brae Joanie Ferd 903

CED	BW	WW	YW	SC	Milk	MB	RE
+6	+1.8	+73	+128	+0.90	+29	+0.00	+0.71

- BW: 79 ET Adj WW: 820 REA: 110

Lot
49

ZWT GLACIER 3527

Birth Date: 09/11/23 • BULL +*21010556 • Tattoo: 3527

+*S A V Renown 3439
+*Coleman Glacier 041
 19866409 #+*Coleman Donna 439

#*Connealy Final Product
#Mill Brae FP Joanie 3063
 17630369 #Mill Brae FA Joanie 9263

+Rito 707 of Ideal 3407 7075
 *S A V Blackcap May 4136
 #+GDAR Game Day 449
 +*Coleman Donna 714
 *Connealy Product 568
 #Ebonista of Conanga 471
 #*S A V Final Answer 0035
 +Mill Brae Joanie Ferd 903

CED	BW	WW	YW	SC	Milk	MB	RE
+6	+1.8	+73	+128	+0.90	+29	-0.01	+0.62

- BW: 89 ET Adj WW: 862
- *Highest adj WW of Fall 2 year olds!*

- A trio of flush brothers that are real sale highlights. These powerful sons of Coleman Glacier 041 are out of the legendary and now deceased donor dam, Mill Brae FP Joanie 3063.
- That would make these bulls maternal siblings to the \$180,000 Montana Judgement 1038 who is the prepotent AI sire in the Montana Ranch and Vision Angus programs.
- If you're looking to move the needle in your program with your next bull purchase, then look no further, these three flush brothers are your answer.
- **Selling full possession and retaining 1/3 semen interest in Lots 47-49.**



ZWT NATURAL LAW 3625 – Lot 50

Lot 50

ZWT NATURAL LAW 3625

Birth Date: 10/05/23 • BULL +*21133120 • Tattoo: 3625

Bar-E-L Natural Law 52Y

19310190 Bar-E-L Magnolia 143K

*S A V First Class 0207

+*AVF Elba 6052

17376730 #+S A V Elba 4436

#+*G A R Grid Maker
S A V Abigale 0451
Bar E L MCC 365 Icon 20H
Double Four Duchess 12G
#S A V Net Worth 4200
#*S A V Duke Girl 7348
#S A V 8180 Traveler 004
S A V Elba 1094

CED	BW	WW	YW	SC	Milk	MB	RE
+3	+3.6	+49	+91	+0.36	+25	+0.31	+0.40

- BW: 87 ET Adj WW: 620
- Lawless is a stout and rugged made son of the legendary female sire Bar-E-L Natural Law 52Y. This young herd bull stands on an excellent foot and is ready to get to work.
- His dam is AVF Elba 6052 is a ranch favorite donor of many visitors. 6052 has a front pasture look and is still standing strong at 13 years of age.
- If you're looking for a bull to sire a great set of replacement females, then Lawless is the answer.



AVF ELBA 6052 – DAM Lot 51, 52, 53 & 54



ZWT SUMMITT 3618 – Lot 51

Lot 51 **ZWT SUMMITT 3618**

Birth Date: 10/04/23 • BULL +*21054080 • Tattoo: 3618

+*ZWT Summitt 6507
18561289 +*Coleman Donna 714

+*S A V Elba 918
16393111 S A V Elba 1094

+*S A V Renown 3439
+Rito 707 of Ideal 3407 7075
*S A V Blackcap May 4136
#*Connealy Onward
+*Coleman Donna 386
#CAR Duke 104
*S A V Blackcap May 4136
#+S A F 598 Bando 5175
S A V Elba 7099

CED	BW	WW	YW	SC	Milk	MB	RE
+6	+1.0	+60	+105	+0.34	+27	+0.20	+0.40

- BW: 80 ET Adj WW: 719 IMF: 108 **HEIFER BULL**
- This son of ST Genetics sire ZWT Summitt 6507 a product of our embryo program and is bred to sire an outstanding set of replacement heifers.
- The combination of Donna 714 and SAV Elba 918 packs this pedigree full of Stacked Maternal Power.



ZWT SOUTH AMERICA 3558 – Lot 55



ZWT INTERVENTION 380 – Lot 52

Lot 52 **ZWT INTERVENTION 380**

Birth Date: 11/04/23 • BULL +21320235 • Tattoo: 380

+*ZWT Intervention 7363
18987241 *E A Rose 918

+*S A V Elba 918
16393111 S A V Elba 1094

+*S A V Impact 5595
#*S A V International 2020
+S A V Emblynette 3301
#*S A V Final Answer 0035
E A Rose 738
#CAR Duke 104
*S A V Blackcap May 4136
#+S A F 598 Bando 5175
S A V Elba 7099

CED	BW	WW	YW	SC	Milk	MB	RE
+6	+1.6	+57	+99	+0.23	+32	+0.12	+0.30

- BW: 80 ET Adj WW: 624 **HEIFER BULL**
- Dam's WWR 6/99 YWR 4/102
- A powerful and eye-catching bull, sired by ZWT Intervention 7363, a past sale topper that commanded \$42,000.
- His dam is SAV Elba 918 who is a direct daughter of the legendary SAV Elba 1094.

Lot 55 **ZWT SOUTH AMERICA 3558**

Birth Date: 09/18/23 • BULL +*21054083 • Tattoo: 3558

+*Hummel South America
19919943 Rubeta Fontana 7567

+*ZWT Elba 5065
18213183 S A V Elba 5383

Don Aparicio Serrucho57 Maxi
Don Jose 176 Maxi
Don Aparicio Serranias 57
Consenza Don Roberto 338
Rubeta Fontana 6207
+Rito 707 of Ideal 3407 7075
*S A V Blackcap May 4136
#S A V 8180 Traveler 004
S A V Elba 1094

CED	BW	WW	YW	SC	Milk	MB	RE
+3	+2.2	+69	+122	+0.43	+24	+0.07	+1.01

- BW: 84 ET Adj WW: 714 REA: 102
- This bull, out of outcross genetic sire Hummel South America, comes with that extra maternal look.
- His dam was a beautiful SAV Renown 3439 daughter that stemmed back to SAV Elba 5383. Outcross genetics here backed by proven longevity.

Lot 53 **ZWT PROSPERITY 375**

Birth Date: 11/5/23 • BULL 21367275 • Tattoo: 375

#+S A V Providence 6922
#S A V Prosperity 9131
16396523 #S A V Emblynette 3123

#*S A V Heritage 6295
+S A V Elba 918
16393111 S A V Elba 1094

#+S A V 004 Predominant 4438
S A V May 7238
#B C C Bushwacher 41-93
#S A V Emblynette 1177
#CAR Duke 104
*S A V Blackcap May 4136
#+S A F 598 Bando 5175
S A V ELba 7099

CED	BW	WW	YW	SC	Milk	MB	RE
I+4	I+3.6	I+62	I+103	I+1.08	I+33	I+.30	I+.25

- BW: 87 Adj WW: 659
- A pair of flush brothers sired by the great maternal sire SAV Prosperity 9131. Look for these bulls to sire you an outstanding set of replacement heifers that will continue to get better as they age.

Lot 54 **ZWT PROSPERITY 378**

Birth Date: 11/4/23 • BULL 21369507 • Tattoo: 378

#+S A V Providence 6922
#S A V Prosperity 9131
16396523 #S A V Emblynette 3123

#*S A V Heritage 6295
+S A V Elba 918
16393111 S A V Elba 1094

#+S A V 004 Predominant 4438
S A V May 7238
#B C C Bushwacher 41-93
#S A V Emblynette 1177
#CAR Duke 104
*S A V Blackcap May 4136
#+S A F 598 Bando 5175
S A V ELba 7099

CED	BW	WW	YW	SC	Milk	MB	RE
I+4	I+3.6	I+62	I+103	I+1.08	I+33	I+.30	I+.25

- BW: 89 Adj WW: 683



SAV ELBA 918 – DAM Lot 51



ZWT INTERVENTION 7363 – SIRE Lot 52



ZWT MERCURY 3550 – Lot 56

Lot 56

ZWT MERCURY 3550

Birth Date: 09/18/23 • BULL +*21259735 • Tattoo: 3550

*Brooking Firebrand 6068
+*Brooking Mercury 9057
 21259703 *Brooking Beauty 333

*Brooking Bank Note 4040
 Brooking Annie K 390
 #*S A V Harvester 0338
 TLA Beauty 6R
 #S A V 8180 Traveler 004
 +S A V May 2410
 CAR Tracker 305
 #A C Duke Girl 330

#S A V Net Worth 4200
***S A V Duke Girl 8161**
 16056318 #A C Duke Girl 57

CED	BW	WW	YW	SC	Milk	MB	RE
-1	+3.4	+58	+104	+1.33	+33	+0.36	+0.41

• BW: 92 ET Adj WW: 651 IMF: 101

Lot 57

ZWT MERCURY 3554

Birth Date: 09/18/23 • BULL +*21259723 • Tattoo: 3554

*Brooking Firebrand 6068
+*Brooking Mercury 9057
 21259703 *Brooking Beauty 333

*Brooking Bank Note 4040
 Brooking Annie K 390
 #*S A V Harvester 0338
 TLA Beauty 6R
 #S A V 8180 Traveler 004
 +S A V May 2410
 CAR Tracker 305
 #A C Duke Girl 330

#S A V Net Worth 4200
***S A V Duke Girl 8161**
 16056318 #A C Duke Girl 57

CED	BW	WW	YW	SC	Milk	MB	RE
-1	+3.4	+58	+104	+1.33	+33	+0.38	+0.53

• BW: 92 ET Adj WW: 620 IMF: 109

- A pair of flush brothers sired by outcross sire Brooking Mercury 9057, sure to sire you a nice set of calves.
- Their dam is a unique daughter of SAV Net Worth 4200 stemming back to the maternal Duke Girl cow family.



ZWT CASINO 3522 – Lot 58

Lot 58

ZWT CASINO 3522

Birth Date: 09/07/23 • BULL +*21367276 • Tattoo: 3522

*CFCC Black Jack 001
+*KR Casino 6243
 18624063 *Malsons Savannah 27Y

*Silveiras El Capitan 6510
 CFCC Fantasia Dateline 633
 VAR Allegiance 5157
 +Malsons Savannah 27W
 #*S A V Brilliance 8077
 +*PVF Missie 790
 Vermilion Pony X Press
 K Bar D Wendy K1T

#+*PVF Insight 0129
+*K Bar D Wendy 151E
 18850309 +*K Bar D Wendy 1010

CED	BW	WW	YW	SC	Milk	MB	RE
+2	+3.8	+61	+110	+1.16	+27	+0.14	+0.75

• BW: 88 ET Adj WW: 716

- A stylish son of KR Casino 6243 that is out of K Bar D Wendy 151E.

Lot 59

ZWT MAGA 3640

Birth Date: 10/09/23 • BULL *21189441 • Tattoo: 3640

#+*S A V President 6847
+*Square B MAGA 8299
 19461009 +*+*S A V Madame Pride 0235

#+*Coleman Charlo 0256
 *S A V Blackcap May 4136
 #+S A V 004 Density 4336
 S A V Madame Pride 0075
 +Rito 707 of Ideal 3407 7075
 BR Polly 8077-472
 #*N Bar Emulation EXT
 #S A V Emblynette April 1509

#+*S A V 707 Rito 9969
+*S A V Emblynette 3614
 17593492 #S A V Emblynette 7260

CED	BW	WW	YW	SC	Milk	MB	RE
+4	+2.7	+51	+93	+0.82	+24	+0.39	+0.63

• BW: 80 Adj WW: 671 IMF: 119

- A powerful and well-made bull that stands on a great foot. His dam was a former embryo donor that went back to the great SAV Emblynette 7260.



S A V RENOVATION 6822 – SIRE Lot 60

Lot
60

ZWT RENOVATION 3648

Birth Date: 10/10/23 • BULL +*21225858 • Tattoo: 3648

#+*S A V Renown 3439
+*S A V Renovation 6822
 18579309 +*S A V Madame Pride 0151

*Duff Honcho 426
Duff Dixie Erica 244 1729
 19211212 +Duff Blackcap 651 244

+Rito 707 of Ideal 3407 7075
 *S A V Blackcap May 4136
 #+S A V 004 Density 4336
 S A V Madame Pride 0075
 +Bar Wick Eureka 943 310
 *Duff BI 619 LadyPop 1017
 O C C Prototype 847P
 *Duff NL 753L Blackcap 651

CED	BW	WW	YW	SC	Milk	MB	RE
+1	+2.0	+62	+101	+0.73	+14	+0.22	+0.39

- BW: 86 ET Adj WW: 761 Ratio: 106 REA: 105
- A powerful and soft-made bull that stands on an excellent foot. He is sired by SAV Renovation 6822 and out of powerful Duff Honcho daughter.
- A maternal brother was a sale highlight in the 2023 event that went to Overton Angus of Speedwell, TN.

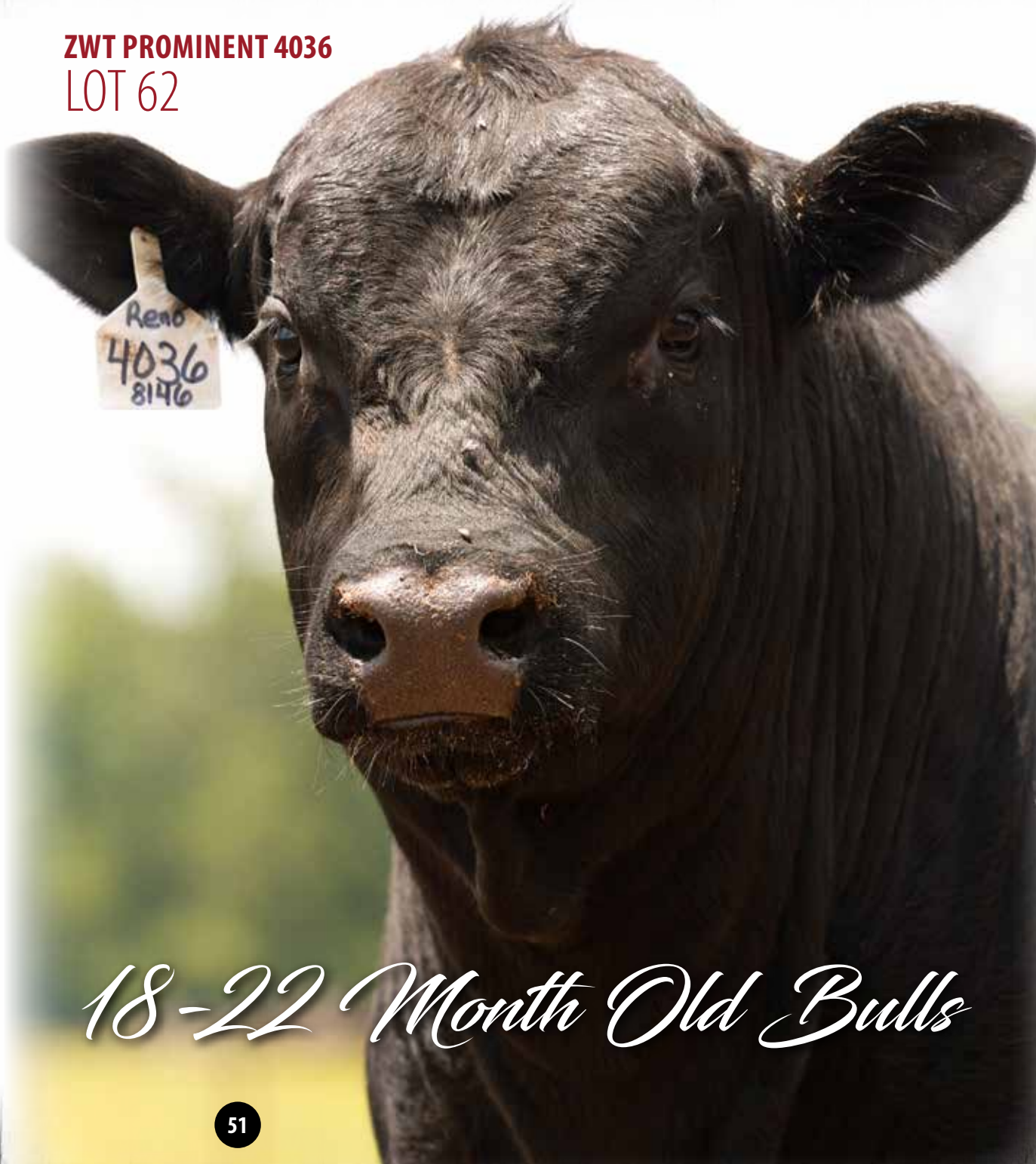
Lot
61

3557

Birth Date: • COMMERCIAL BULL • Tattoo: 3557

- BW: 75 Adj WW: 702 IMF: 101 REA: 101
- Stout made son of Brooking Gold Coin 8069

ZWT PROMINENT 4036 LOT 62



ZWT RANCH

18-22 Month Old Bulls

ZWT PROMINENT 4036



COLEMAN DONNA 8146 – DAM

Lot
62

ZWT PROMINENT 4036

Birth Date: 02/04/24 • BULL +*21053716 • Tattoo: 4036

#+*S A V Renown 3439	+Rito 707 of Ideal 3407 7075
+*S A V Renovation 6822	*S A V Blackcap May 4136
18579309	#+S A V 004 Density 4336
+*S A V Madame Pride 0151	S A V Madame Pride 0075
#Connealy Thunder	#Baldridge Kaboom K243 KCF
+*Coleman Donna 8146	#Parka of Conanga 241
19248244	#*Connealy Onward
+*Coleman Donna 714	+*Coleman Donna 386

CED	BW	WW	YW	SC	Milk	MB	RE
+3	+1.6	+66	+118	+0.71	+23	+0.48	+0.16

- BW: 79 ET Adj WW: 653
- Dam's WWR 4/109 YWR 4/109
- Prominent has big time herd bull potential written all over him.
- His sire is none other than, SAV Renovation 6822, the proven Semex AI sire that has produced top selling bulls all over the country.
- The dam of Prominent is the legendary Coleman Donna 8146, the Connealy Thunder daughter that has been heard about around the world.
- Make sure to study him on sale day, he is jam packed with muscle, backed by one of the best cows in the business, and ready to get to work.
- **Selling full possession and retaining 1/3 semen interest.**

ZWT RESTORE 4356



MILL BRAE FP JOANIE 3063 – DAM

Lot
63

ZWT RESTORE 4356

Birth Date: 02/28/24 • BULL +*21053714 • Tattoo: 4356

#+*S A V Renown 3439 +*S A V Renovation 6822 18579309	+*S A V Madame Pride 0151 #*Connealy Final Product #Mill Brae FP Joanie 3063 17630369	+Rito 707 of Ideal 3407 7075 *S A V Blackcap May 4136 #+S A V 004 Density 4336 S A V Madame Pride 0075 *Connealy Product 568 #Ebonista of Conanga 471 #*S A V Final Answer 0035 +Mill Brae Joanie Ferd 903
--	---	---

CED	BW	WW	YW	SC	Milk	MB	RE
+4	+2.3	+70	+126	+1.23	+23	+0.38	+0.35

- BW: 88 ET
- Dam's WWR 7/103 YWR 7/106
- Restore is an incredibly well balanced and powerful son of SAV Renovation 6822 that stands on a great foot.
- His dam is Mill Brae FP Joanie 3063, making him a maternal sibling to the \$180,000 Montana Judgement 1038.
- This bull will sire sons that will be at the top of your sort and daughters that will go in the replacement pen.
- Add this big-time herd sire to your program.
- **Selling full possession and retaining 1/3 semen interest.**



ZWT WRANGLER 4227 – Lot 64

Lot 64

ZWT WRANGLER 4227

Birth Date: 03/12/24 • BULL 21325508 • Tattoo: 4227

#+*S A V Rainfall 6846
+*S A V Riverside 2381
 20480732 #*S A V Madame Pride 4407

#*S A V International 2020
+*PVA Blackcap May 4397
 17884732 #+S A V May 2397

#+*Coleman Charlo 0256
 *S A V Blackcap May 4136
 #+*S A V Resource 1441
 +*+*S A V Madame Pride 0235
 #*S A V Harvestor 0338
 #+*S A V Emblynette 5483
 #+S A F 598 Bando 5175
 S A V May 7238

CED	BW	WW	YW	SC	Milk	MB	RE
+4	+2.6	+64	+112	+0.84	+20	+0.27	+0.78

- BW: 87 Adj WW: 715 Ratio: 119 REA: 102
- Wrangler is a thick and dense made son of resident herd sire SAV Riverside 2381. This bull is complete from front to back, packed with muscle, and sound moving.
- His dam is the proven embryo donor Blackcap May 4397 a past sale feature that is now a part of the Montana Ranch Program.
- If you're looking for a bull to sire a high level of consistency then Wrangler deserves a serious look.



Lot 65

ZWT RIVERSIDE 4048

Birth Date: 02/10/24 • BULL 21282607 • Tattoo: 4048

#+*S A V Rainfall 6846
+*S A V Riverside 2381
 20480732 #*S A V Madame Pride 4407

Musgrave Mainstay 2059
ZWT Elba 2259
 20464755 ZWT Elba 9124

#+*Coleman Charlo 0256
 *S A V Blackcap May 4136
 #+*S A V Resource 1441
 +*+*S A V Madame Pride 0235
 *Connealy Mainstay
 SA Edwina Erica 567-313
 +*Reisig Rito 7075 634
 +*ZWT Elba 7367

CED	BW	WW	YW	SC	Milk	MB	RE
-4	+5.9	+76	+140		+20	+0.37	+0.59

- BW: 97 Adj WW: 607 Ratio: 110 YWR: 113 REA: 103
- A powerful bull here sired by SAV Riverside 2381 and out of a dam boasting a production record of WR 2@103 and YR 1@113.



ZWT RIVERSIDE 4048 – Lot 65



ZWT RIVERSIDE 4028 – Lot 66

Lot 66

ZWT RIVERSIDE 4028

Birth Date: 02/03/24 • BULL 21053736 • Tattoo: 4028

#+*S A V Rainfall 6846
+*S A V Riverside 2381
 20480732 #*S A V Madame Pride 4407

#+*Coleman Charlo 0256
 *S A V Blackcap May 4136
 #+*S A V Resource 1441
 +*+*S A V Madame Pride 0235
 #+*PVF Insight 0129
 Laffins Galaxie 3332
 EXG RS First Rate S903 R3
 Dameron Northern Miss 3114

CED	BW	WW	YW	SC	Milk	MB	RE
+9	+0.6	+56	+107		+16	+0.45	+0.69

- BW: 65 Adj WW: 639 IMF: 128 **HEIFER BULL**
- A very well-made bull that is suitable to breed heifers.
- Stemming back to a full sib to Dameron First Class.

Lot
67

ZWT MASTER PLAN 4200

Birth Date: 03/11/24 • BULL +21320233 • Tattoo: 4200

+*S A V Bloodline 9578
20478145
+*S A V Blueprint 2933
*S A V Emblynette 5377

#+*S A V Rainfall 6846
#*S A V Emblynette 2369
#+*S A V Renown 3439
*S A V Emblynette 0084
+Rito 707 of Ideal 3407 7075
*S A V Blackcap May 4136
BC Classic 385-7
+Pine Coulee Patsy T502

#+*S A V Resource 1441
Pine Coulee Patsy A13
17583446 Pine Coulee Patsy X36

CED	BW	WW	YW	SC	Milk	MB	RE
-4	+3.5	+74	+134	+0.41	+28	+0.37	+0.95

- BW: 90 ET Adj WW: 652
- Dam's WWR 3/103
- Master Plan is a very thick and attractive son of our resident herd sire SAV Blueprint 2933 and possibly the best of his flush brothers.
- His dam is nonother than Pine Coulee Patsy A13, making this bull a maternal sibling to several past sale highlights.

ZWT MASTER PLAN 4200 – Lot 67



ZWT BLUEPRINT 4178 – Lot 68



ZWT BLUEPRINT 4358 – Lot 69

Lot
68

ZWT BLUEPRINT 4178

Birth Date: 03/07/24 • BULL +21367277 • Tattoo: 4178

+*S A V Bloodline 9578
20478145
+*S A V Blueprint 2933
*S A V Emblynette 5377

#+*S A V Resource 1441
Pine Coulee Patsy A13
17583446 Pine Coulee Patsy X36

#+*S A V Rainfall 6846
#*S A V Emblynette 2369
#+*S A V Renown 3439
*S A V Emblynette 0084
+Rito 707 of Ideal 3407 7075
*S A V Blackcap May 4136
BC Classic 385-7
+Pine Coulee Patsy T502

CED	BW	WW	YW	SC	Milk	MB	RE
-4	+3.5	+74	+134	+0.41	+28	+0.37	+0.95

- BW: 90 ET Adj WW: 624

Lot
69

ZWT BLUEPRINT 4358

Birth Date: 03/09/24 • BULL +*21053725 • Tattoo: 4358

+*S A V Bloodline 9578
20478145
+*S A V Blueprint 2933
*S A V Emblynette 5377

#+*S A V Resource 1441
Pine Coulee Patsy A13
17583446 Pine Coulee Patsy X36

#+*S A V Rainfall 6846
#*S A V Emblynette 2369
#+*S A V Renown 3439
*S A V Emblynette 0084
+Rito 707 of Ideal 3407 7075
*S A V Blackcap May 4136
BC Classic 385-7
+Pine Coulee Patsy T502

CED	BW	WW	YW	SC	Milk	MB	RE
-4	+3.5	+74	+134	+0.41	+28	+0.36	+0.99

- BW: 87 ET Adj WW: 736 REA: 102



PINE COULEE
PATSY A13 –
DAM

- These flush brothers are sure to grab your attention. They are thick, proud looking and backed by one of the best cows in ranch history.
- Look for these powerful Blueprint sons to sire an incredible set of calves for their new owners.

Lot
70

ZWT BLUEPRINT 4168

Birth Date: 03/07/24 • BULL +*21053711 • Tattoo: 4168

+*S A V Bloodline 9578
20478145
+*S A V Blueprint 2933
*S A V Emblynette 5377

#+*S A V Resource 1441
Pine Coulee Patsy A13
17583446 Pine Coulee Patsy X36

#+*S A V Rainfall 6846
#*S A V Emblynette 2369
#+*S A V Renown 3439
*S A V Emblynette 0084
+Rito 707 of Ideal 3407 7075
*S A V Blackcap May 4136
BC Classic 385-7
+Pine Coulee Patsy T502

CED	BW	WW	YW	SC	Milk	MB	RE
-4	+3.5	+74	+134	+0.41	+28	+0.35	+0.89

- BW: 90 ET Adj WW: 693



ZWT FRAMEWORK 4329 – Lot 71



ZWT BLUEPRINT 4223 – Lot 72



ZWT BLUEPRINT 4176 – Lot 73

Lot 71

ZWT FRAMEWORK 4329

Birth Date: 04/13/24 • BULL 21325511 • Tattoo: 4329

+*S A V Bloodline 9578
+*S A V Blueprint 2933
 20478145 *S A V Emblynette 5377

+*Brooking Major 7103

***ZWT Donna 0658**

20364051 +*ZWT Donna 3072

#+*S A V Rainfall 6846
 #*S A V Emblynette 2369
 #+*S A V Renown 3439
 *S A V Emblynette 0084
 #*S A V International 2020
 *Soo Line Rose 1019
 #*N Bar Emulation EXT
 +*Coleman Donna 386

CED	BW	WW	YW	SC	Milk	MB	RE
-6	+4.5	+63	+113		+33	+0.29	+0.83

- BW: 89 Adj WW: 677 Ratio: 114 IMF: 111 REA: 101
- Dam's WWR 3/110 YWR 106
- Quite possibly one of the best bulls in the entire offering. This bull sired by SAV Blueprint 2933 is powerful and stands on a great foot.
- His dam is a beautiful cow sired by Brooking Major 7103 with a production record WR 3@110 and YR 1@106.
- Study the depth in the pedigree here because it goes back to maybe one of the best cows on the ranch, ZWT Donna 3072, a direct daughter of N Bar Emulation EXT.

Lot 72

ZWT BLUEPRINT 4223

Birth Date: 03/17/24 • BULL 21325516 • Tattoo: 4223

+*S A V Bloodline 9578
+*S A V Blueprint 2933
 20478145 *S A V Emblynette 5377

+*S A V Stallion 2413

ZWT Donna 4081

17911848 +ZWT Donna 1121

#+*S A V Rainfall 6846
 #*S A V Emblynette 2369
 #+*S A V Renown 3439
 *S A V Emblynette 0084
 #S A V Mustang 9134
 *S A V Madame Pride 5290
 +*Duff Stimulus 856
 +Coleman Donna 7173

CED	BW	WW	YW	SC	Milk	MB	RE
-2	+3.8	+76	+132		+33	+0.32	+0.75

- BW: 95 Adj WW: 784 Ratio: 130 YWR: 123 REA: 113
- Dam's WWR 4/117
- Power, production and a great look in this herd bull. Out of a dam with a production WR 4@117.

S A V BLUEPRINT 2933 – SIRE



Lot 73

ZWT BLUEPRINT 4176

Birth Date: 03/07/24 • BULL +*21053721 • Tattoo: 4176

+*S A V Bloodline 9578
+*S A V Blueprint 2933
 20478145 *S A V Emblynette 5377

#+*Coleman Charlo 0256

+*S A V Blackcap May 6605

18531349 #+S A V May 2397

#+*S A V Rainfall 6846
 #*S A V Emblynette 2369
 #+*S A V Renown 3439
 *S A V Emblynette 0084
 #*O C C Paxton 730P
 +Bohi Abigale 6014
 #+S A F 598 Bando 5175
 S A V May 7238

CED	BW	WW	YW	SC	Milk	MB	RE
-1	+3.1	+71	+125	+0.57	+31	+0.39	+0.69

- BW: 89 ET
- Dam's WWR 2/105
- A powerful future herd sire out of the prepotent donor SAV Blackcap May 6605.
- This bull is a great representation of SAV Blueprint 2933's ability to add muscle and performance.



ZWT BIG TIMBER 4033 – Lot 74

Lot 74

ZWT BIG TIMBER 4033

Birth Date: 02/01/24 • BULL *21135207 • Tattoo: 4033

*Connealy Regulator
***WXW Timberline W287**
 18935630

#WXW Miss Wix Lass 063A8 N14

+*S A V Bloodline 9578

+*ZWT Rose 1501

20135893

*E A Rose 918

#*Connealy Cavalry 1149
 Black Cayra of Conanga 8127

#*SydGen C C & 7

WXW Miss Wix Lass 63a8 L67

#+*S A V Rainfall 6846

#*S A V Emblynette 2369

#*S A V Final Answer 0035

E A Rose 738

CED	BW	WW	YW	SC	Milk	MB	RE
+7	+0.6	+60	+107	+	+22	+0.90	+0.95

• BW: 72 Adj WW: 721 Ratio: 102 IMF: 164

REA: 112 **HEIFER BULL**

• This proud looking herd bull is a son of the ABS AI sire WXW Timberline W287. We used this bull as an outcross on heifers to inject growth and add a little marbling

• His dam is a young productive Bloodline daughter that is a full sib to the 2023 top selling bull ZWT Blue Blood 1508.

• Study up here, we got a good bull in Big Timber!



ZWT BLUE BLOOD 1508 – FULL SIBLING TO DAM

Lot 75

ZWT COBALT 4008

Birth Date: 01/21/24 • BULL 21325509 • Tattoo: 4008

#+*LD Capitalist 316
***Musgrave 316 Colossal 137**
 18774441

#*Musgrave Lady Barbara 545

#+*S A V Resource 1441

+ZWT Donna 1695

21048486

+*Coleman Donna 386

#*Connealy Capitalist 028
 LD Dixie Erica 2053

#*Musgrave Big Sky

Musgrave Lady Barbara 272

+Rito 707 of Ideal 3407 7075

*S A V Blackcap May 4136

#Basin Rainmaker 654X

+KMK Donna J311

CED	BW	WW	YW	SC	Milk	MB	RE
+6	+0.8	+74	+127	+	+25	+	+

• BW: 76 Adj WW: 681 Ratio: 126

• **HEIFER BULL**

• Cobalt is a powerful son of AI sire Musgrave Colossal 137. This bull combines muscle shape and added rib.

• The dam is a direct daughter of the iconic Donna 386 sired by the time tested and proven AI sire SAV Resource 1441. Big time pedigree!



MUSGRAVE 316 COLOSSAL 137 – SIRE



ZWT COBALT 4008 – Lot 75



ZWT COUNTRY BOY 4391 – Lot 76



BALDRIDGE ISABEL D753 – DAM

Lot 76

ZWT COUNTRY BOY 4391

Birth Date: 03/15/24 • BULL +*21320232 • Tattoo: 4391

Kraye Big Country 0179
19902000 #Miss Burgess JK 772

+*Baldrige Isabel D753
18590234 *Baldrige Isabel Y69

#+*S A V Regard 4863
+*S A V Blackcap May 3525
#+*Basin Payweight 1682
Miss Burgess JK 5243
#*Connealy Consensus 7229
Mill Bar Bemindful Maid 6304
#*Styles Upgrade J59
+Baldrige Isabel T935

CED	BW	WW	YW	SC	Milk	MB	RE
+7	+1.3	+80	+142	+1.21	+30	+0.58	+0.61

• **BW: 75 ET HEIFER BULL**

- Solid herd bull potential in this one. Country boy is sired by the Breeder Link bull, Kraye Big Country 0179, a Quarterback son that injects great performance.
- His dam is the proven embryo donor Baldrige Isabel D753, a prepotent daughter of Baldrige Isabel Y69.
- D753 is a top-tier matron in the Shady Brook program and has produced several high sellers.



ZWT GALACTIC 4141 – Lot 77

Lot 77

ZWT GALACTIC 4141

Birth Date: 03/04/24 • BULL +*21053712 • Tattoo: 4141

***SITZ Galactic 723G**
19393010 *Sitz Barbaramere Jet 328E

+*Baldrige Isabel D753
18590234 *Baldrige Isabel Y69

#*Mohren Substantial 272
*SITZ Pride 200B
*Sitz Emblem 11125
+*Sitz Barbaramere Jet 771Z
#*Connealy Consensus 7229
Mill Bar Bemindful Maid 6304
#*Styles Upgrade J59
+Baldrige Isabel T935

CED	BW	WW	YW	SC	Milk	MB	RE
+7	+0.4	+75	+135	+0.89	+25	+0.64	+0.67

- **BW: 89 ET Adj WW: 683 IMF: 137 REA: 105**
- Another direct son of the great Baldrige Isable D753, the headlining Shady Brook donor.
- This bull is sired by SITZ Galactic 723G, a Stellar son that is owned by Hoover Angus, Vollmer Angus, and High Point Genetics.



ZWT RENO 4046 – Lot 78



ZWT STALLION 4214 – Lot 80



ZWT DAKOTA 4299 – Lot 81

Lot 78

ZWT RENO 4046

Birth Date: 02/10/24 • BULL +*21053719 • Tattoo: 4046

+*S A V Renovation 6822 #+*S A V Renown 3439
 +*S A V Madame Pride 0151
+*Duff Reno 2248 *+*Duff Dixie Erica 2624 1741
 20374990 *+*Duff Honcho 426
 +*Duff Dixie Erica 2624
 #+*S A V Renown 3439
+*ZWT Primrose 5068
 18205058 O C C Primrose 932L
 +Rito 707 of Ideal 3407 7075
 *S A V Blackcap May 4136
 +O C C Just Right 619J
 +O C C Primrose 677H

CED	BW	WW	YW	SC	Milk	MB	RE
+5	+1.1	+51	+92		+16	+0.02	+0.48

- BW: 82 ET Adj WW: 643
- A pair of flush brothers sired by Duff Reno 2248, the bull acclaimed by Kirk Duff and Mike Marlow to be one of the best bulls bred at Duff Cattle Company to date.
- These bulls are jam packed with muscle and performance and their dam stems back to former foundation donor, OCC Primrose 932L.

Lot 79

ZWT RENO 4080

Birth Date: 02/20/24 • BULL +*21053720 • Tattoo: 4080

+*S A V Renovation 6822 #+*S A V Renown 3439
 +*S A V Madame Pride 0151
+*Duff Reno 2248 *+*Duff Dixie Erica 2624 1741
 20374990 *+*Duff Honcho 426
 +*Duff Dixie Erica 2624
 #+*S A V Renown 3439
+*ZWT Primrose 5068
 18205058 O C C Primrose 932L
 +Rito 707 of Ideal 3407 7075
 *S A V Blackcap May 4136
 +O C C Just Right 619J
 +O C C Primrose 677H

CED	BW	WW	YW	SC	Milk	MB	RE
+5	+1.1	+51	+92		+16	+0.00	+0.60

- BW: 97 ET Adj WW: 753 REA: 104

Lot 80

ZWT STALLION 4214

Birth Date: 03/14/24 • BULL 21320234 • Tattoo: 4214

+*S A V Rainfall 6846 #+*Coleman Charlo 0256
 #S A V Blackcap May 4136
***Mohnen Dakota 2528** *CC Merritt 030
 19209934 #*Mohnen Ruth 972 Mohnen Ruth 1689
 #S A V International 2020
 #+S A V Blackcap May 5530
 +*ZWT Brigade 3665
 #+*S A V Ignition 5629
ZWT Eriskay 9593
 19893318 ZWT Eriskay 6925
 ZWT Eriskay B 400

CED	BW	WW	YW	SC	Milk	MB	RE
+5	+1.4	+72	+127		+35	+0.40	+0.71

- BW: 76 Adj WW: 847 Ratio: 120 YWR: 118 IMF: 104 REA: 113
- Dam's WWR 3/114
- A powerful and high performing son of Mohnen Dakota 2528, the former resident herd sire of the Montana Ranch program.
- Stallion was the highest performing bull at weaning time last year with an adjusted weaning weight of 847lbs and an adjusted yearling weight of 1,319lbs.
- His productive dam boasts a production record of WR 3@114 and YR 1@118.
- Get in on the production!

Lot 81

ZWT DAKOTA 4299

Birth Date: 03/26/24 • BULL 21325512 • Tattoo: 4299

+*S A V Rainfall 6846 #+*Coleman Charlo 0256
 #S A V Blackcap May 4136
***Mohnen Dakota 2528** *CC Merritt 030
 19209934 #*Mohnen Ruth 972 Mohnen Ruth 1689
 +Rito 707 of Ideal 3407 7075
 #+*S A V Resource 1441
+Tanner 908T Blackbird 4900 *S A V Blackcap May 4136
 18184872 +Bardolia of Peak Dot 908T #+S A V 004 Predominant 4438
 Bardolia of Peak Dot 963H

CED	BW	WW	YW	SC	Milk	MB	RE
+0	+3.9	+54	+107		+25	+0.37	+0.58

- BW: 93 Adj WW: 553 REA: 103
- Powerful son of Mohnen Dakota 2528 whose dam is a daughter of SAV Resource 1441.





ZWT ROCCO 4064 – Lot 82

Lot 82

ZWT ROCCO 4064

Birth Date: 02/14/24 • BULL 21133197 • Tattoo: 4064

#+*S A V Renown 3439 +Rito 707 of Ideal 3407 7075
 +*Blair's Rocco 268F *S A V Blackcap May 4136
 19639204 Bar-E-L Erica 74A Bar-E-L Natural Law 52Y
 HF Erica 339T
 +*S A V Prosperity 2440 #S A V Prosperity 9131
 +S A V Abigale 5650
 *ZWT Georgia F030 +*Duff Stimulus 856
 19680106 +*ZWT Georgina 2192 WK Georgina 9375

CED	BW	WW	YW	SC	Milk	MB	RE
+3	+2.1	+63	+112	+	+30	+0.24	+0.41

- BW: 86 Adj WW: 780 Ratio: 111 YWR: 105
- Dam's WWR 4/105 YWR 2/108
- This bull is a powerful son of Blairs Rocco 268F which combines SAV Blackcap May 4136 and Bar-E-L Erica 74A on the top side of the pedigree.
- This bulls productive dam boasts a production record of WR 4@105 and YR 2@108 and stems back to the foundation donor WK Georgina 9375.
- Real breeding potential in this one.



ZWT BLOODLINE 4075 – Lot 83

Lot 83

ZWT BLOODLINE 4075

Birth Date: 02/18/24 • BULL 21320229 • Tattoo: 4075

#+*S A V Rainfall 6846 #+*Coleman Charlo 0256
 +*S A V Bloodline 9578 *S A V Blackcap May 4136
 19542324 #*S A V Emblynette 2369 #+*S A V 707 Rito 9969
 +*S A V Emblynette 7566
 *S A V Territory 7225 #+*S A V Resource 1441
 Ingram Elba 9032 *S A V Emblynette 3293
 19426869 +S A V Elba 0522 #S A V Pioneer 7301
 +S A V Elba 7627

CED	BW	WW	YW	SC	Milk	MB	RE
-2	+3.2	+72	+130	+	+23	+0.45	+0.34

- BW: 93 Adj WW: 599 YWR: 103
- This bull is sired by the \$250,000 SAV Bloodline 9578 and is out of a dam that goes back to one of the most impressive cows in recent history, SAV Elba 0522.
- Look to add this top notch sire to your lineup!



ZWT EXTERNAL LAW 4059 – Lot 84



ZWT THROTTLE 4006 – Lot 85



ZWT TRIUMPH 4034 – Lot 86

Lot 84 **ZWT EXTERNAL LAW 4059**

Birth Date: 02/14/24 • BULL +*21135162 • Tattoo: 4059

*Duff Napoleon 232
 +*Blair's External Law
 19639203 Bar-E-L Erica 74A

*Duff Distinction 9105
 +Duff Eur 443 Merle 808
 Bar-E-L Natural Law 52Y
 HF Erica 339T
 +Rito 707 of Ideal 3407 7075
 *S A V Blackcap May 4136
 Ideal 4355 of OT26 2440
 #Ideal 236 of 5189 8651

CED	BW	WW	YW	SC	Milk	MB	RE
+3	+2.7	+72	+119	+1.35	+25	+0.17	+0.75

- BW: 87 ET Adj WW: 723 REA: 105
- Dam's WWR 4/108
- Thick and powerful! This bull, sired by Blairs External Law, is wide from front to back, sound, big topped, and jam packed full of muscle.
- His dam is Ideal 5123 of RES Marjorie was our selection from the Jorgensen Mother Load event. She is a stout and powerful daughter of the proven SAV Resource 1441.

Lot 85 **ZWT THROTTLE 4006**

Birth Date: 01/16/24 • BULL +*21053718 • Tattoo: 4006

*S A V Territory 7225
 +*S A V Throttle 2961
 20480748 #+*S A V Madame Pride 8375

*S A V Resource 1441
 #+*S A V President 6847
 #*S A V Madame Pride 4407
 +Rito 707 of Ideal 3407 7075
 *S A V Blackcap May 4136
 BC Classic 385-7
 +Pine Coulee Patsy T502

Pine Coulee Patsy A13
 17583446 Pine Coulee Patsy X36

CED	BW	WW	YW	SC	Milk	MB	RE
-2	+4.1	+81	+142	+0.95	+22	+0.37	+1.03

- BW: 83 ET Adj WW: 636
- Dam's WWR 3/103
- Another powerful son out of Pine Coulee Patsy A13. This time being sired by SAV Throttle 2961, the \$100,000 herd sire in the Schaff Angus Valley and Voss Angus programs.
- This bull is going to sire you some calves with top notch performance. Find him on sale day

Lot 86 **ZWT TRIUMPH 4034**

Birth Date: 02/01/24 • BULL +*21345400 • Tattoo: 4034

#+*Coleman Bravo 6313
 +*Coleman Triumph 9145
 19555917 +*Lawsons Chloe C815

#*S A V Harvestor 0338
 S A V Emblynette 4223
 17824171 +S A V Emblynette 1786

CED	BW	WW	YW	SC	Milk	MB	RE
+4	+2.9	+64	+109	+0.82	+23	+0.50	+0.60

- BW: 80 ET Adj WW: 654 IMF: 128 REA: 103
- This bull, sired by Coleman Triumph 9145, is well-balanced and sharp looking.
- His dam is SAV Emblynette 4223, making him a maternal sibling to our resident herd sire, Brooking Gold Coin 8069.
- The blending of Chloe C815 and Emblynette 4223 made a good one here the daughters should be keepers.



ZWT GOLD COIN 4323 – Lot 87

Lot 87

ZWT GOLD COIN 4323

Birth Date: 04/11/24 • BULL 21325517 • Tattoo: 4323

*Brooking Bank Note 4040
 +*Brooking Gold Coin 8069
 19377658 SA V Emblynette 4223

+*S A V Resource 1441
 +*Siebring Elba 796
 18847912 +S A V Elba 171

#+*Connealy Earnan 076E
 *E A Rose 918
 #*S A V Harvestor 0338
 +S A V Emblynette 1786
 +Rito 707 of Ideal 3407 7075
 *S A V Blackcap May 4136
 #+S A V Bismarck 5682
 +S A V Elba 801

CED	BW	WW	YW	SC	Milk	MB	RE
+5	+2.4	+76	+126	+0.51	+24	+0.48	+0.76

- BW: 82 Adj WW: 711 Ratio: 119 YWR: 111 REA: 110
- Dam's WWR 3/108 YWR 3/103 REA 10/106
- An attractive son of Brooking Gold Coin 8069 that is out of a beautiful SAV Resource 1441 daughter.
- Replacement heifers out of this bull should be sublime.

Lot 90

ZWT GOLD COIN 4196

Birth Date: 03/10/24 • BULL 21053729 • Tattoo: 4196

*Brooking Bank Note 4040
 +*Brooking Gold Coin 8069
 19377658 SA V Emblynette 4223

#*N Bar Emulation EXT
 +*ZWT Donna 3072
 17557864 +*Coleman Donna 386

#+*Connealy Earnan 076E
 *E A Rose 918
 #*S A V Harvestor 0338
 +S A V Emblynette 1786
 #Emulation N Bar 5522
 N Bar Primrose 2424
 #Basin Rainmaker 654X
 +KMK Donna J311

CED	BW	WW	YW	SC	Milk	MB	RE
+4	+2.3	+59	+102	+0.27	+19	+0.26	+0.56

- BW: 82 Adj WW: 672 REA: 102
- This Gold Coin son is out of ZWT Donna 3072 a ranch favorite of ours. Don't be afraid to take a good look at this bull. He's loaded with maternal excellence.



ZWT GOLD COIN 4270 – Lot 88

Lot 88

ZWT GOLD COIN 4270

Birth Date: 03/30/24 • BULL 21325514 • Tattoo: 4270

*Brooking Bank Note 4040
 +*Brooking Gold Coin 8069
 19377658 SA V Emblynette 4223

+*S A V Revolution 4846
 ZWT Lady 7800
 19687483 +ZWT Lady 3061

#+*Connealy Earnan 076E
 *E A Rose 918
 #*S A V Harvestor 0338
 +S A V Emblynette 1786
 *S A V Revere 1180
 *S A V Blackcap May 4136
 +ZWT 0478 Ideal 1078

CED	BW	WW	YW	SC	Milk	MB	RE
+2	+3.3	+76	+126	+	+22	+0.49	+0.28

- BW: 90 Adj WW: 709 Ratio: 119 YWR: 122 IMF: 113
- Dam's WWR 5/109 IMF 3/115
- Another top performing son of Gold Coin.
- His dam is a beautiful cow with a production record WR 5@109 and YR 2@102
- These are some of the most versatile cattle on the ranch. Powerful and rugged!



ZWT GOLD COIN 4171 – Lot 89

Lot 89

ZWT GOLD COIN 4171

Birth Date: 03/07/24 • BULL 21053730 • Tattoo: 4171

*Brooking Bank Note 4040
 +*Brooking Gold Coin 8069
 19377658 SA V Emblynette 4223

+ZWT Trinity 9080
 ZWT Barbara 4032
 17911818 Bear Mtn Barbara 5221

#+*Connealy Earnan 076E
 *E A Rose 918
 #*S A V Harvestor 0338
 +S A V Emblynette 1786
 #D H D Traveler 6807
 WK Georgina 9375
 #+Boyd New Day 8005
 Bear Mtn Barbara 2419

CED	BW	WW	YW	SC	Milk	MB	RE
+2	+3.8	+53	+94	+	+19	+0.32	+0.31

- BW: 89 Adj WW: 675
- Stout made son again here by Gold Coin.
- These are some of the most versatile cattle on the ranch. Powerful and rugged!





ZWT BIG JON 4345 – Lot 91

Lot 91

ZWT BIG JON 4345

Birth Date: 04/21/24 • BULL 21277908 • Tattoo: 4345

#+*Deer Valley Growth Fund
 #+*Deer Valley Rita 36113
 #*JMB Traction 292
 Stucky Erica 0310
 #*Connealy Capitalist 028
 LD Dixie Erica 2053
 #S A V Net Worth 4200
 *S A V Blackcap May 4136

CED	BW	WW	YW	SC	Milk	MB	RE
+14	+0.2	+83	+147	+1.03	+26	+0.18	+0.75

- BW: 79 Adj WW: 767 Ratio: 129 YWR: 120 REA: 104 **HEIFER BULL**
- Dam's WWR 3/110 YWR 2/110 • Power and calving ease! This combination is not easy to come by, but when you study the pedigree and look at the bulls dam..the dots start to connect.
- This bulls dam is a big time up and comer in our embryo program so don't miss out on this herd bull.
- Safe for use on heifers.



ZWT SPADE 4098 – Lot 92

Lot 92

ZWT BIG JON 4098

Birth Date: 02/26/24 • BULL 21053733 • Tattoo: 4098

#+*Deer Valley Growth Fund
 #+*Deer Valley Rita 36113
 #*JMB Traction 292
 Stucky Erica 0310
 #*Foster Quarterback 9524
 #+*S A V Quarterback 7933
 +*Foster Everelda Entense A04
 +*S A V Ignition 5629
 ZWT Blackcap 5188

CED	BW	WW	YW	SC	Milk	MB	RE
I+10	I+2.3	I+75	I+125		I+32	I+.34	I+.56

- BW: 86 Adj WW: 847 Ratio: 120 YWR: 110 IMF: 112
- Thick, deep and powerful! This bull is of high quality and stands on excellent feet!
- He boasts a weaning ratio of 120 and a yearling ratio of 110!
- This bull is true stockmans kind!



TYPE – Lot 93

Lot 93

ZWT MARVEL 4000

Birth Date: 11/8/23 • BULL 21370745 • Tattoo: 4000

PVF Insight 0129
 #+*Deer Valley Rita 36113
 #*JMB Traction 292
 Stucky Erica 0310
 #+*S A V Quarterback 7933
 +*Foster Everelda Entense A04
 +*S A V Ignition 5629
 ZWT Blackcap 5188

CED	BW	WW	YW	SC	Milk	MB	RE
I+3	I+3.3	I+64	I+112	I+.22	I+17	I+.17	I+.79

- BW: 81
- A sharp made son by Lafllins Marvel 1801 that typifies his breeding character.
- The dam to this bull is a full sibling to Dameron First Class a rarity all on its own. If you're looking for a bull to sire you something unique then this is your guy!



ZWT WAR CHARM 4004 – Lot 94

Lot 94

ZWT WAR CHARM 4004

Birth Date: 4/2/24 • BULL 21350599 • Tattoo: 4004

#*BUBS Southern Charm AA31
 #*Silveiras Conversion 8064
 #*Hickory Hill Erica 009
 +*S A V Hesston 2217
 +Limestone Rose Z153
 +Thomas Powder River 9053
 Boyd Everelda Entense 0054
 #*O C C Homer 650H
 +Rudow's Molly 829

CED	BW	WW	YW	SC	Milk	MB	RE
+7	+1.4	+69	+112		+30		

- BW: 78 Adj WW: 686 Ratio: 117 **HEIFER BULL**
- Dam's WWR 4/113 YWR 2/107
- A solid bull that is a grandson of BUBS Southern Charm AA31out of a productive Gun Powder daughter. A good option here for your bull line up!

ZWT RANCH

Lot 95 ZWT WAR PROSPERITY 4493

Birth Date: 3/14/24 • BULL 21351664 • Tattoo: 4493

#+S A V Providence 6922 #+S A V 004 Predominant 4438
S A V May 7238
#S A V Prosperity 9131
16396523 #S A V Emblynette 3123
#B C C Bushwacher 41-93
#S A V Emblynette 1177
#*O C C Missing Link 830M
Boss Miss Link 0156
17467491 PAR Miss Blackbird 525
#O C C Hunter 928H
P A R Emblazon 50

CED	BW	WW	YW	SC	Milk	MB	RE
I+9	I+2.2	I+57	I+96	I+.83	I+26	I+.17	I+.23

- BW: 82 Adj WW: 678
- A pair of flush brothers sired by proven maternal sire SAV Prosperity 9131! These bull's pedigrees are loaded with maternal greats and will be sure to sire a remarkable set of replacement heifers.

Lot 96 ZWT WAR PROSPERITY 4504

Birth Date: 3/8/24 • BULL 21351669 • Tattoo: 4504

#+S A V Providence 6922 #+S A V 004 Predominant 4438
S A V May 7238
#S A V Prosperity 9131
16396523 #S A V Emblynette 3123
#B C C Bushwacher 41-93
#S A V Emblynette 1177
#*O C C Missing Link 830M
Boss Miss Link 0156
17467491 PAR Miss Blackbird 525
#O C C Hunter 928H
P A R Emblazon 50

CED	BW	WW	YW	SC	Milk	MB	RE
I+9	I+2.2	I+57	I+96	I+.83	I+26	I+.17	I+.23

- BW: 80 Adj WW: 665

Lot 97 ZWT SMOOTH 4361

Birth Date: 04/15/24 • BULL 21325513 • Tattoo: 4361

#+S A V 004 Density 4336 #S A V 8180 Traveler 004
S A V May 7238
+D Lazy T Smooth 1088
20507479 +*S A V Madame Pride 0412
#S A V Pioneer 7301
S A V Madame Pride 0075
#*KG Justified 3023
Connealy Judgment
KG Miss Magic 1443
***Bear Mtn Judy 6535**
18583302 Bear Mtn Judy 3092
#S A V Pioneer 7301
Bear Mtn Judy 0133

CED	BW	WW	YW	SC	Milk	MB	RE
+8	+1.2	+70	+108		+25	+0.47	+0.50

- BW: 83 Adj WW: 666 Ratio: 112
- First time sons are selling out of our resident go-to-maternal herd sire, D Lazy T Smooth 1088. He is a stout herd bull sired by the maternal giant SAV 004 Density 4336.
- This bulls dam is Bear Mtn Judy 6535 the top tier embryo donor.
- Bred for maternal on this one!

Lot 98 ZWT SMOOTH 4372

Birth Date: 05/21/24 • BULL 21325510 • Tattoo: 4372

#+S A V 004 Density 4336 #S A V 8180 Traveler 004
S A V May 7238
+D Lazy T Smooth 1088
20507479 +*S A V Madame Pride 0412
#S A V Pioneer 7301
S A V Madame Pride 0075
#S A V Net Worth 4200
#*S A V Duke Girl 7348
+*AVF Elba 6052
17376730 #+S A V Elba 4436
#S A V 8180 Traveler 004
S A V Elba 1094

CED	BW	WW	YW	SC	Milk	MB	RE
+5	+3.8	+68	+112		+24	+0.19	+0.48

- BW: 84 Adj WW: 686 Ratio: 126
- Dam's WWR 7/101
- Another son of Smooth out of the front pasture donor dam AVF Elba 6052.
- The daughters out of this one should be fancy!

Lot 99 ZWT BRAVO 4077

Birth Date: 02/19/24 • BULL 21053735 • Tattoo: 4077

#+*Coleman Bravo 6313 #+*Coleman Charlo 0256
#*Duff Bravo 6313 21405 +*Coleman Donna 714
20303881 +*GCC Juanada 617C Et +*Duff New Edition 6108
O C C Juanada 927K
#*Connealy Capitalist 028
LD Dixie Erica 2053
+*MAK Blackcap May 1433 #S A V 8180 Traveler 004
20117609 +*WMS Blackcap May 5136 #+S A V May 2397

CED	BW	WW	YW	SC	Milk	MB	RE
+6	+2.4	+73	+117		+22	+0.13	+0.57

- BW: 80 Adj WW: 795 Ratio: 113
- Would be suitable for larger framed heifers.
- Stout made bull and a grandson of Coleman Bravo 6313.
- This bull's granddam is a full sib in blood to the legendary SAV Blackcap May 4136.

Lot 100 ZWT BRAVO 4381

Birth Date: 03/22/24 • BULL 21282608 • Tattoo: 4381

#+*Coleman Bravo 6313 #+*Coleman Charlo 0256
#*Duff Bravo 6313 21405 +*Coleman Donna 714
20303881 +*GCC Juanada 617C Et +*Duff New Edition 6108
O C C Juanada 927K
#S A V 8180 Traveler 004
S A V May 7238
+*ZWT Donna 2089 #+S A V 004 Density 4336
20534252 +*ZWT Donna 4873 #+*Coleman Juneau 044
+*Coleman Donna 005

CED	BW	WW	YW	SC	Milk	MB	RE
+8	+1.3	+53	+90		+23		

- BW: 73 **HEIFER BULL**
- Another Coleman Bravo 6313 grandson that is out of a beautiful Density daughter.
- Product of a 2-year-old dam here and the pedigree is loaded with maternal. Safe for use on heifers

Lot 101 ZWT ARISTOCRAT 4198

Birth Date: 03/11/24 • BULL 21320230 • Tattoo: 4198

#*Musgrave 316 Exclusive #+*LD Capitalist 316
***ZWT Aristocrat 1502** #*Musgrave Prim Lassie 163-386
20340429 MF Forever Lady 9134 #+*Deer Valley Growth Fund
+Bear Mtn Forever Lady 4075
#*S A V International 2020
#*Soo Line Rose 1019
ZWT Elba 0656 +Rito 707 of Ideal 3407 7075
20364050 +ZWT Elba 5349 S A V Elba 5383

CED	BW	WW	YW	SC	Milk	MB	RE
+8	+0.2	+53	+98		+28	+0.28	+0.76

- BW: 68 Adj WW: 517 REA: 110 **HEIFER BULL**
- Stout made bull out of a home raised herd sire. This bulls dam traces back to the foundation donor SAV Elba 5383. Some longevity built into this pedigree.

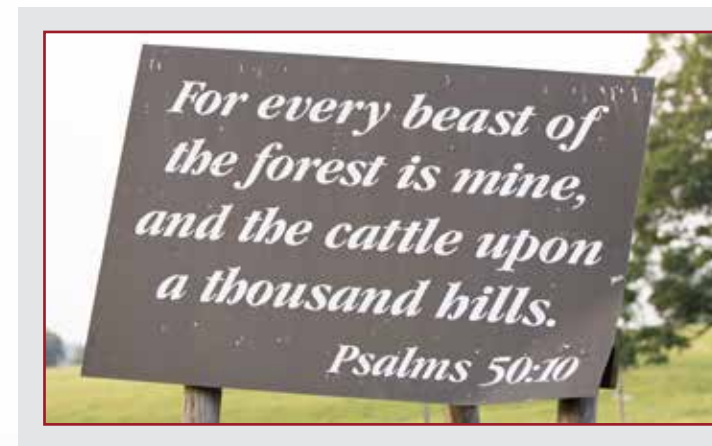
Lot 102 ZWT REVIVAL 4058

Birth Date: 02/14/24 • BULL +21053715 • Tattoo: 4058

+*S A V Renovation 6822 #+*S A V Renown 3439
+*Brooking Revival 0074 +*S A V Madame Pride 0151
20057293 *Soo Line Rose 1019 #*Soo Line Motive 9016
*E A Rose 918
#+*Coleman Charlo 0256
#*S A V Blackcap May 4136
+*S A V Madame Pride 9838 #*S A V Priority 7283
19506920 #*S A V Madame Pride 3145 S A V Madame Pride 1171

CED	BW	WW	YW	SC	Milk	MB	RE
+7	-0.1	+59	+109	+0.66	+29	+0.57	+0.89

- BW: ET
- This bull is out of Brooking Revival the Renovation son that calls Montana Ranch his home. This bulls dam is one of the best daughters of SAV Raindance 6848 around.





Simmental Bulls

Z W T PROFITEER 34L



Lot 103

Profit

WS Pilgrim H182U
WAGR Panarama 204Z
TJ High Calibre 556B
STN Miss Star Light
Miss Star Above

Z W T PROFITEER 34L

Birth Date: 3/18/23 • BULL (4583849) • Tattoo: 34L

CNS Dream On L186
WS Marla 276M
Mr HOC Broker
3C Melody M668 BZ
MCM Top Grade 018X
PRS Lady Done Right W214
Flying B Cut Above
Miss Star Bright

CE	BW	WW	YW	Milk	MARB	REA
6	5.1	87	128	16	0.07	0.69

- **Black Polled Purebred SM BW: 87**
- Powerful! Striking! These are words that will come to mind when you lay eyes on Profiteer. He's an imposing beast that stands on big sound feet.
- His sire is the legendary PROFIT who was owned by Hartman Cattle Company and CK/Wager. Profit has sired numerous top sellers across the Simmental breed.
- His dam is STN Miss Star Light who needs no introduction and serves as a donor in the Griswold program. That would make Profiteer a maternal sibling to the great Ledger!
- Theres power in the pedigree on this one so make sure to find him on sale day.



Z W T WAR HORSE 4011 – Lot 104

- War Horse is a powerful herd bull prospect and the standout among this trio of flush brothers. He is loaded with muscle and bone. Destined to sire cattle with an incredible look.
- The dam to this trio of flush brothers is a full sibling to W/C Loaded Up and is also the mother to ST Genetics AI sire DMCC Hitman.
- The ceiling is high for these flush brothers. They are loaded with genetic potential.

Lot 104

Z W T WAR HORSE 4011

Birth Date: 1/21/24 • BULL 4582773 • Tattoo: 4011M

WS Pilgrim H182U
LKCC Bold Venture 194F

Ms Crysteel Voltage 194A

Remington Lock N Load 54U
DMCC Annabelle 3A

Aubreys Black Blaze III

CNS Dream On L186
WS Marla 276M
SS/PRS High Voltage 244X
BF Miss Crysteel Tango
Remington On Target 2S
Bar15 Miss Knight 78E-51G
3C Macho M450 BZ
Blaze IV 1P

CE	BW	WW	YW	Milk	MARB	REA
12	0.8	76	99	15	0.1	0.73

• Black Homo Polled Purebred SM BW: 100

Lot 105

Z W T BOLD VENTURE 4023

Birth Date: 1/22/24 • BULL (4582775) • Tattoo: 4023M

WS Pilgrim H182U
LKCC Bold Venture 194F

Ms Crysteel Voltage 194A

Remington Lock N Load 54U
DMCC Annabelle 3A

Aubreys Black Blaze III

CNS Dream On L186
WS Marla 276M
SS/PRS High Voltage 244X
BF Miss Crysteel Tango
Remington On Target 2S
Bar15 Miss Knight 78E-51G
3C Macho M450 BZ
Blaze IV 1P

CE	BW	WW	YW	Milk	MARB	REA
12	0.8	76	99	15	0.1	0.73

• Black Homo Polled Purebred SM BW: 83

Lot 106

Z W T BOLD VENTURE 4078

Birth Date: 2/19/24 • BULL (4582777) • Tattoo: 4078M

WS Pilgrim H182U
LKCC Bold Venture 194F

Ms Crysteel Voltage 194A

Remington Lock N Load 54U
DMCC Annabelle 3A

Aubreys Black Blaze III

CNS Dream On L186
WS Marla 276M
SS/PRS High Voltage 244X
BF Miss Crysteel Tango
Remington On Target 2S
Bar15 Miss Knight 78E-51G
3C Macho M450 BZ
Blaze IV 1P

CE	BW	WW	YW	Milk	MARB	REA
12	0.8	76	99	15	0.1	0.73

• Black Homo Polled Purebred SM BW: 85



ZWT TECUMSEH 3535 – Lot 107

Lot 107

ZWT TECUMSEH 3535

Birth Date: 9/11/23 • BULL 4582771 • Tattoo: 3535L

VCL Foresight
STCC Tecumseh 058J
HF Serena

Mr CCF 20-20
HCCO Countess 412D
Mr NLC Upgrade U8676
Miss Knockout 74T

Gambles Hot Rod
Top Line Abigale 1060
S A V Abigale 7001

Famous 7001
Champion Hill Lady 703
S A V Net Worth 4200
S A V Abigale 8213

CE	BW	WW	YW	Milk	MARB	REA
6	3.0	76	114	21	0.40	0.67

- Black Polled 1/2 SM 1/2 AN BW: 82
- This impressive half-blood Simmental bull is sired by the \$620,000 record selling STCC Tecumseh 058J.
- His dam is a powerful daughter of Gambles Hot Rod and a donor in our program.
- Get on board here with this high performing and attractive Sim-Angus sire.



ZWT POINT PROVEN 4305 – Lot 108

Lot 108

ZWT POINT PROVEN 4305

Birth Date: 4/5/24 • BULL 4585054 • Tattoo: 4305M

Mr CCF 20-20
CKCC Mr 20-20 1658J
CHEZ Gypsy 9661G ET

Mr CCF Vision
HTP SVF Dew The Stroke
Ruby's Currency 7134E
J6RA Bada Bing 1602B
S A V Resource 1441
S A V Madame Pride 0075
N Bar Shadow X4124
N Bar Kinochtry Bty V1499b

S A V Real Pride 4475
ZWT Kinochtry Beauty 6502
Sinclair K Bty 3544 J013

CE	BW	WW	YW	Milk	MARB	REA
11	0.5	72	111	18	0.24	0.62

- Black Polled 1/2 SM 1/2 AN BW: 84
- One of our favorites of the entire bull offering! We named this bull Point Proven because he represents what we are wanting to accomplish in bringing in these Simmental genetics.
- This bull is massive, masculine, and big ribbed! It's not every day that you will find a bull like this one.
- Make sure to find him on sale day..it will be worth your time.



Z W T STRONG N FREE 4148 – Lot 110



WHEATLAND STRONG N FREE 231K – SIRE LOT 110

Lot 109

Z W T MR 2020 4294

Birth Date: 4/2/24 • BULL 4582778 • Tattoo: 4294M

WS Pilgrim H182U
LKCC Bold Venture 194F
 Ms Crysteel Voltage 194A
 GCC New Game 5654C
ZWT Lady 7210
 Gambles Lady 2021

CNS Dream On L186
 WS Marla 276M
 SS/PRS High Voltage 244X
 BF Miss Crysteel Tango
 Dameron First Class
 Duff NE 9375 Georgina 845
 S A V Iron Mountain 8066
 Gambles Lady 3016

CE	BW	WW	YW	Milk	MARB	REA
12	0.5	75	110	13	0.31	0.40

- **Black Homo Polled 1/2 SM 1/2 AN BW: 92**
- A solid half-blood bull that is sure to sire an impressive set of calves. If you're looking to add some Simmental blood then this could be an option.

Lot 110

Z W T STRONG N FREE 4184

Birth Date: 3/9/24 • BULL 4585055 • Tattoo: 4184M

LLW Card True North G71
Wheatland Strong N Free 231K
 Wheatland Lady 182
 S A V First Prize 3642
ZWT Everelda Entense 5011
 ZWT Everelda Entense 1190

GSC GCCO Dew North 102C
 Cox's Joys Princess711E
 ACLL Fortune 393D
 J&J Royal Lass 541
 S A V First Class 0207
 S A V Emblynette 3301
 Dunlouise Jipse Earl E161
 Sitz Everelda Entense 2198

CE	BW	WW	YW	Milk	MARB	REA
10	0.6	66	88	23	0.28	0.44

- **Black Polled 3/8 SM 5/8 AN BW: 86**
- First son to sell out of the exciting resident herd sire Wheatland Strong N Free. This percentage Simmental bull is as good as they come. He's thick butted, soft made and comes with a load of style.
- Couldn't end the book in a neater fashion so make sure and look on sale day. He is sure to impress.

**SELLING 30 SPRING CALVING
 COMMERCIAL COWS BRED TO HERFORD
 AND SIMMENTAL BULLS.**
Due to Calve February & March and some in April.

**SELLING 20 FALL CALVING PAIRS.
 SIMMENTAL CALVES AT SIDE.**

ZWT RANCH

FULLY

Loaded 3

Noon
Thursday
November 6, 2025
Crossville, TN

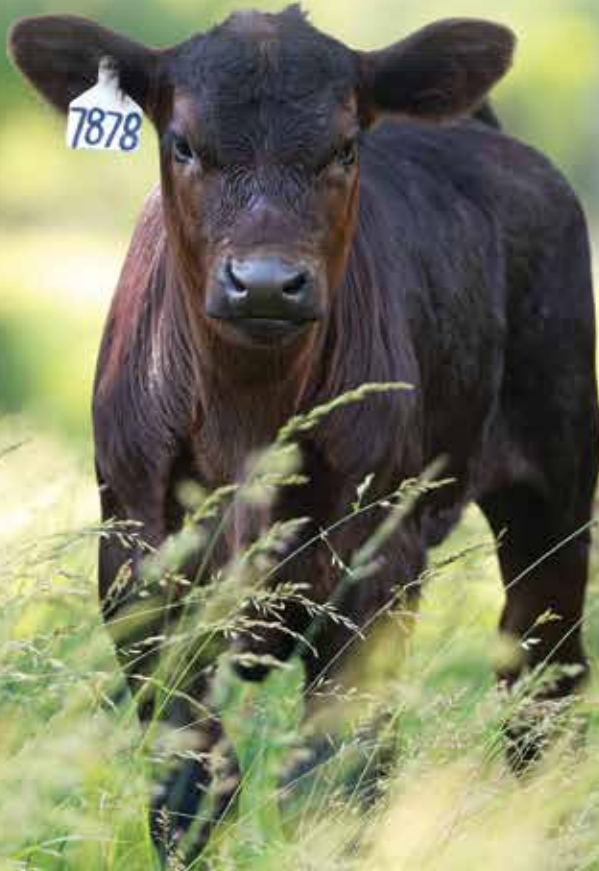
ANGUS BULL & FEMALE SALE

JOIN US FOR THIS INCREDIBLE SALE OF POWER-MATERNAL GENETICS!

ZWT RANCH

Tony, Mary, Zach, Wil & Tate Mayes
1253 McClanahan Drive
Crossville, TN 38571

Presorted
First Class
US Postage
PAID
SlateGroup



*Stacked
Maternal
Power*